

Waters of



Avonmore Demonstration Catchment

Water Quality and Assessment

12th September 2022



An Roinn Tithíochta,
Rialtais Áitiúil agus Oidhreachta
Department of Housing,
Local Government and Heritage

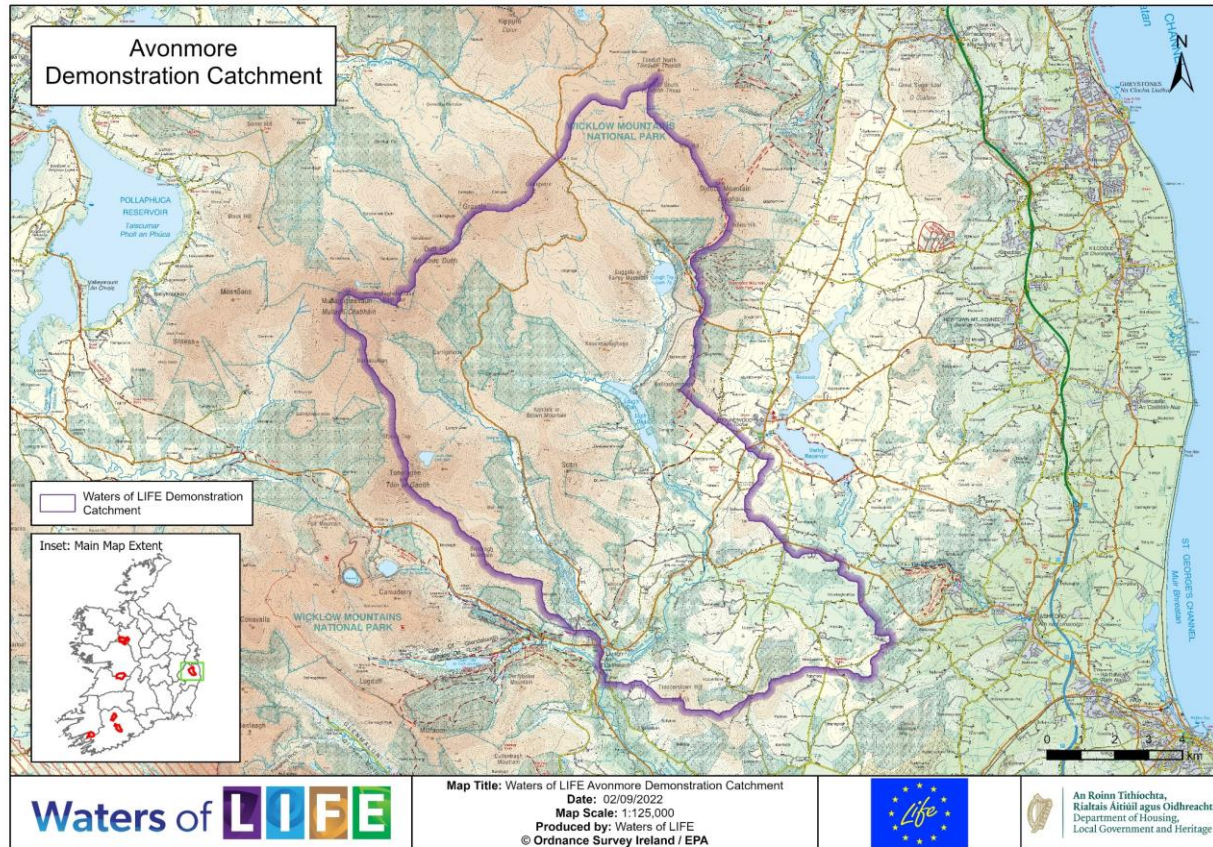
Presentation Contents

- Introduction to Catchments
- The Avonmore Catchment
- Water Quality Measurements
- Water Quality in Avonmore Catchment
- Next Steps – field work



© Avonmore River, Ballard - (Anna Rymaszewicz / Stephen Davis, LAWPRO)

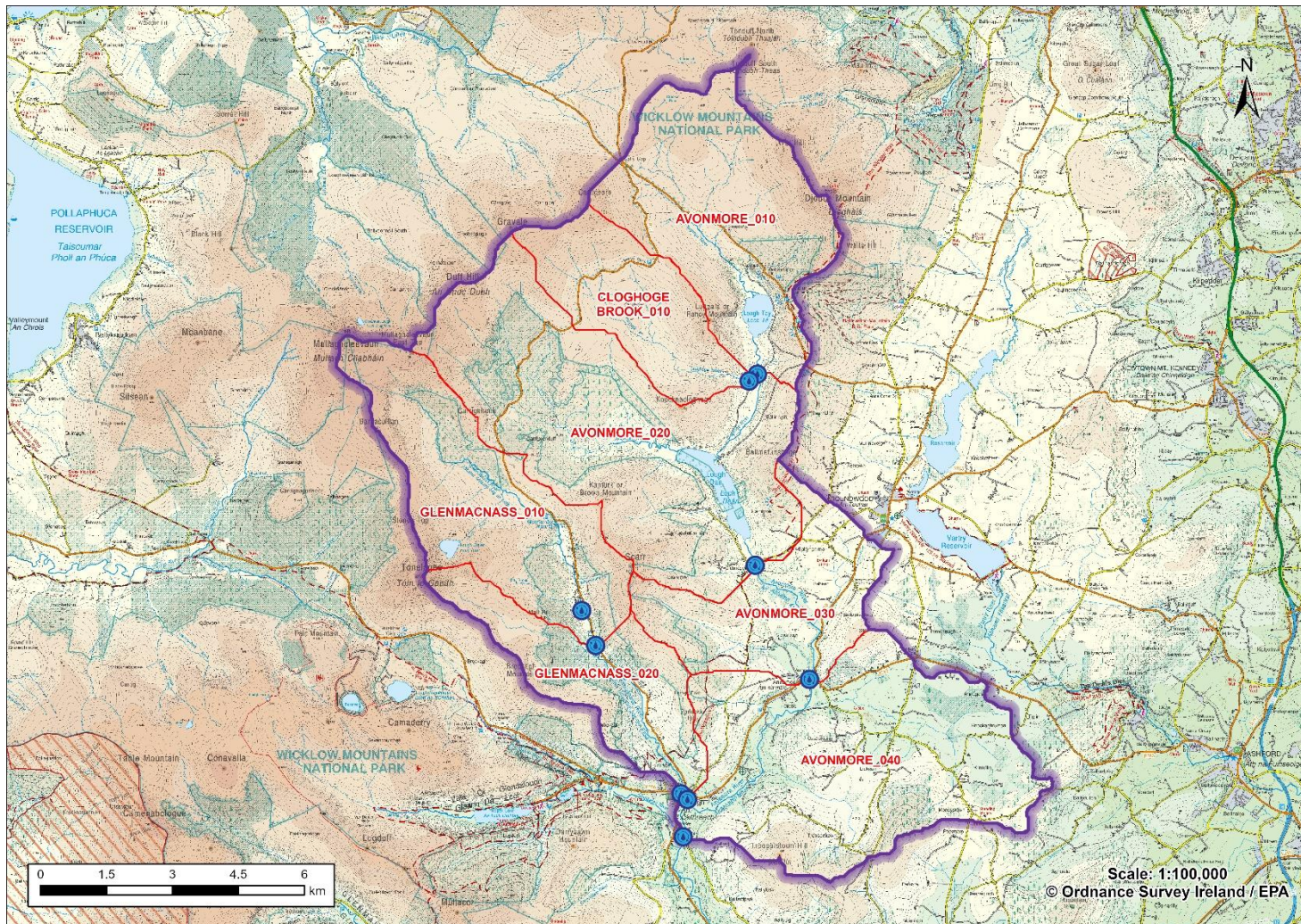
Catchments



A catchment is a specific area of the landscape that collects rainfall and allows it to flow through rivers, lakes and groundwater to reach the sea.

The health of water within a catchment reflects both the natural attributes and the human activities occurring within that specific area.

Avonmore Demonstration Catchment

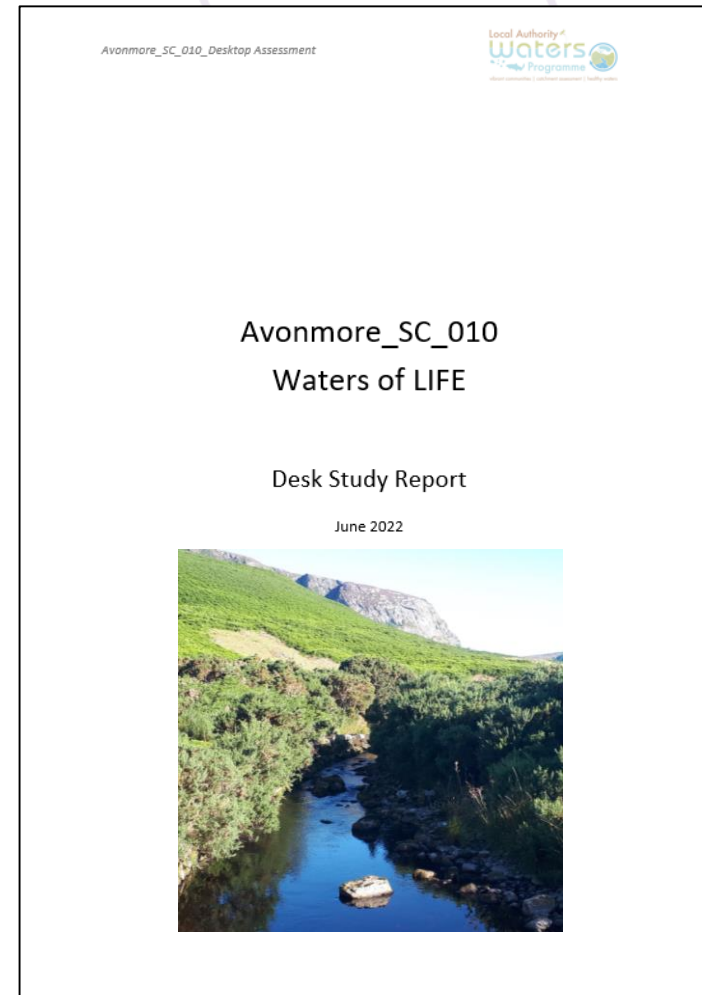


- Avonmore_SC_010 sub-catchment is 141km².
- It consists of seven river waterbodies:
 - Avonmore_010,
 - Avonmore_020,
 - Avonmore_030,
 - Avonmore_040,
 - Cloghoge Brook_010,
 - Glenmacnass_010,
 - Glenmacnass_020;
- and three lake waterbodies:
 - Tay,
 - Dan,
 - Ouler



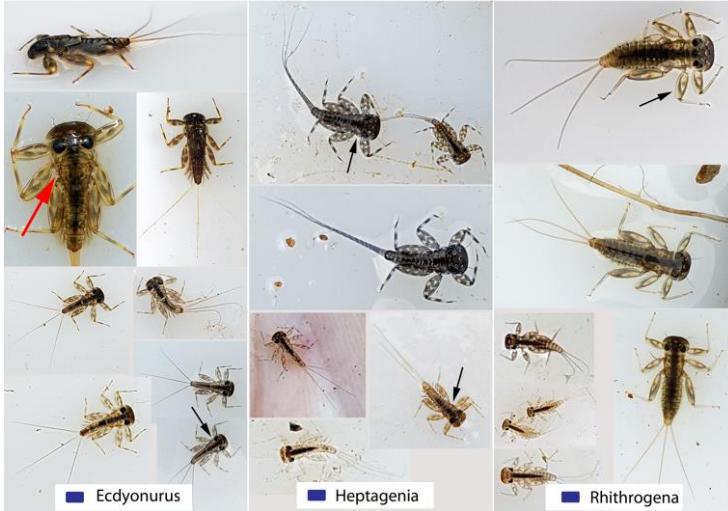
Desk Study

- Background
- Receptor information – water quality data/ assessments -> conclusions on the issue affecting water quality
- Pressures – EPA information, other assessments
- Pathways – how pollutants move from land to the river



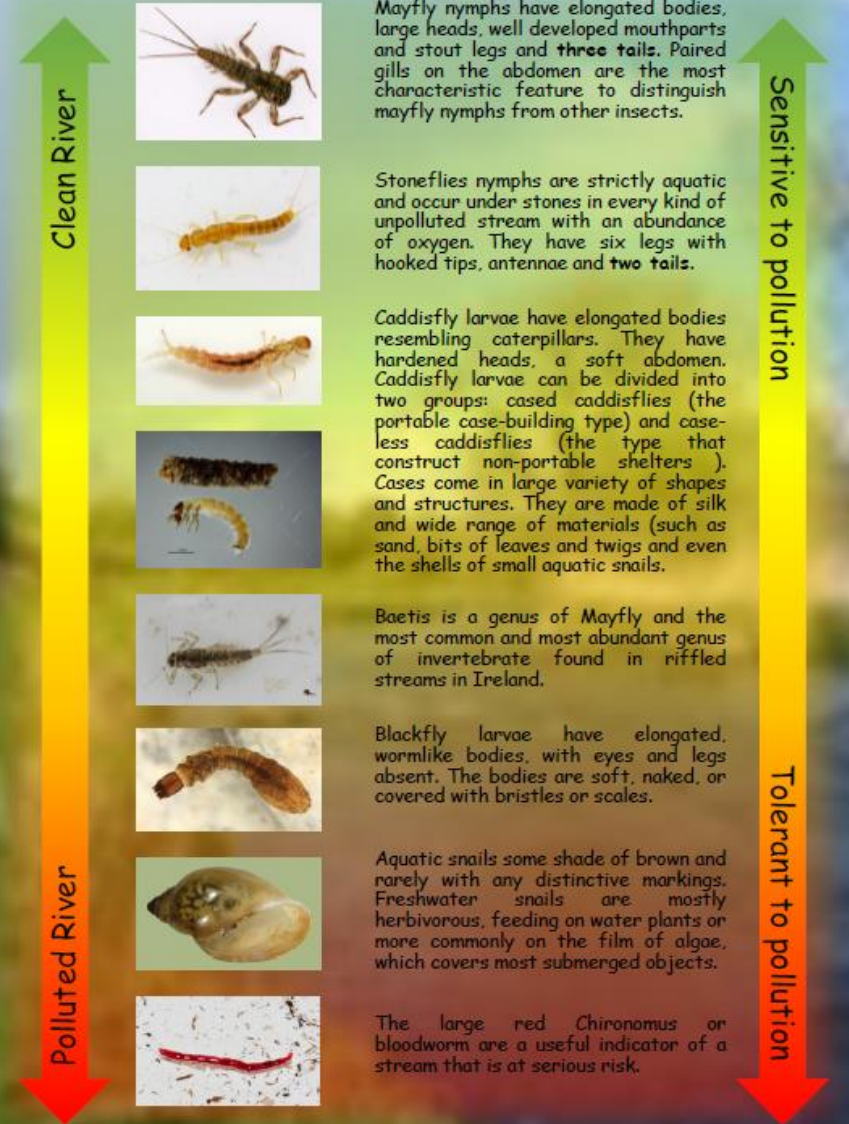
Measuring Water Quality

The Biological Indicators (INV)



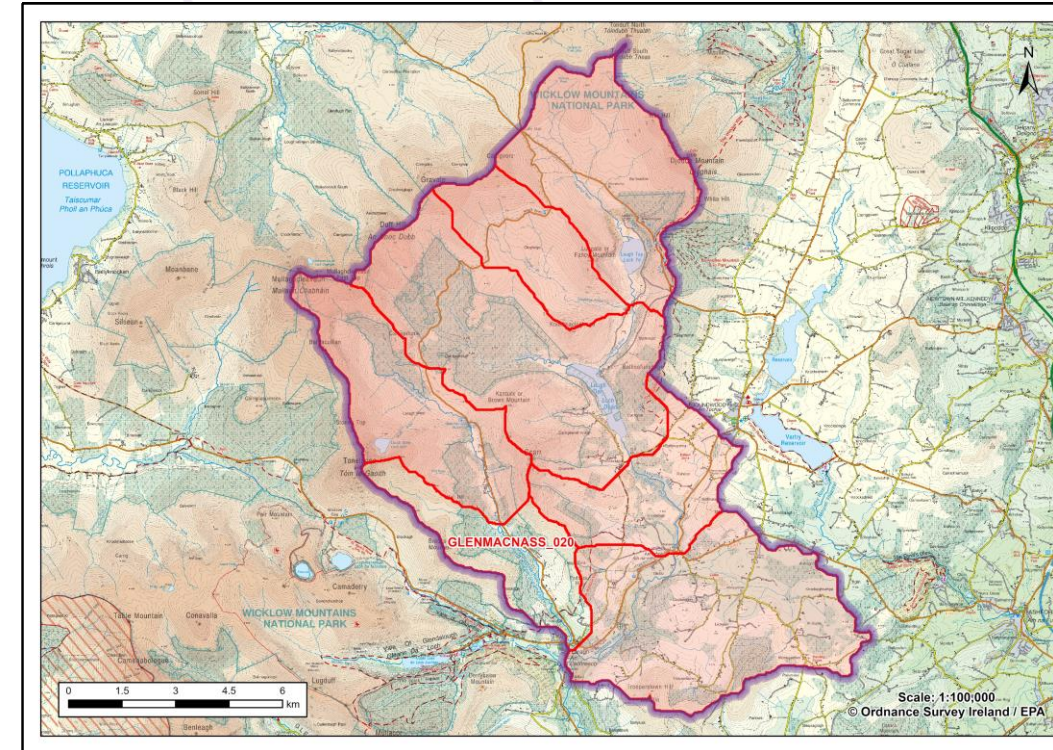
One out all out!!!!

Aquatic insects can be Indicators of Clean Rivers



Water Quality in Avonmore

WB name	High status obj.	Ecological Status				Pressure category
		2009	2012	2015	2018	
AVONMORE_010	Yes	H	M	M	G	Atmospheric
						Agriculture
AVONMORE_020	Yes	H	H	G	G	Forestry
AVONMORE_030	No	G	G	G	G	No Pressure Impacts data available
AVONMORE_040	No	G	H	G	H	No Pressure Impacts data available
CLOGHOGE BROOK_010	No	M	M	M	M	Extractive Industry
GLENMACNASS_010	No	M	M	M	G	Forestry
GLENMACNASS_020	No	M	M	G	G	No Pressure Impacts data available



Immediate Next Steps

- You will see us in the catchment
- Assessment of the catchment
 - Commence October 2022
 - Identify all issues that may affect water quality
- Plan further detailed assessment
 - Catchment walks



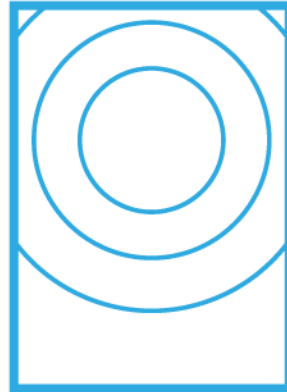
© Avonmore River, Ballard - (Anna Rymaszewicz / Stephen Davis, LAWPRO)

Thank you for listening

Questions?



protect



restore



respect



sustain