



Graney Demonstration Catchment

Water Quality and Assessment

Cormac Mc Conigley

5th October 2022



An Roinn Tithíochta,
Rialtais Áitiúil agus Oidhreachta
Department of Housing,
Local Government and Heritage

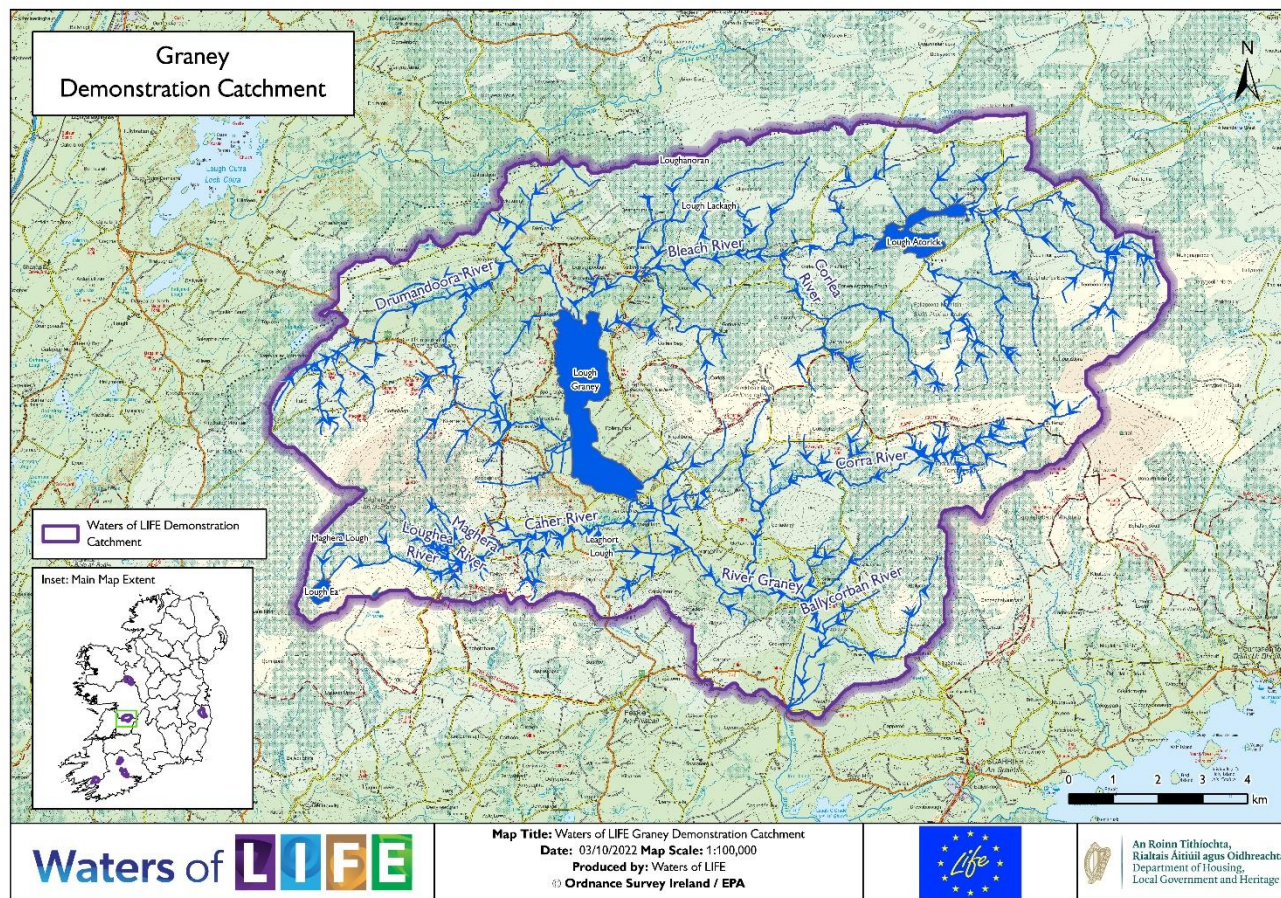
Presentation Contents

- Introduction to Catchments
- The Graney Catchment
- Water Quality Measurements
- Water Quality in Graney Catchment
- Next Steps – field work



© Lough Atorick (Photo by: Aine Donnellan, LAWPRO)

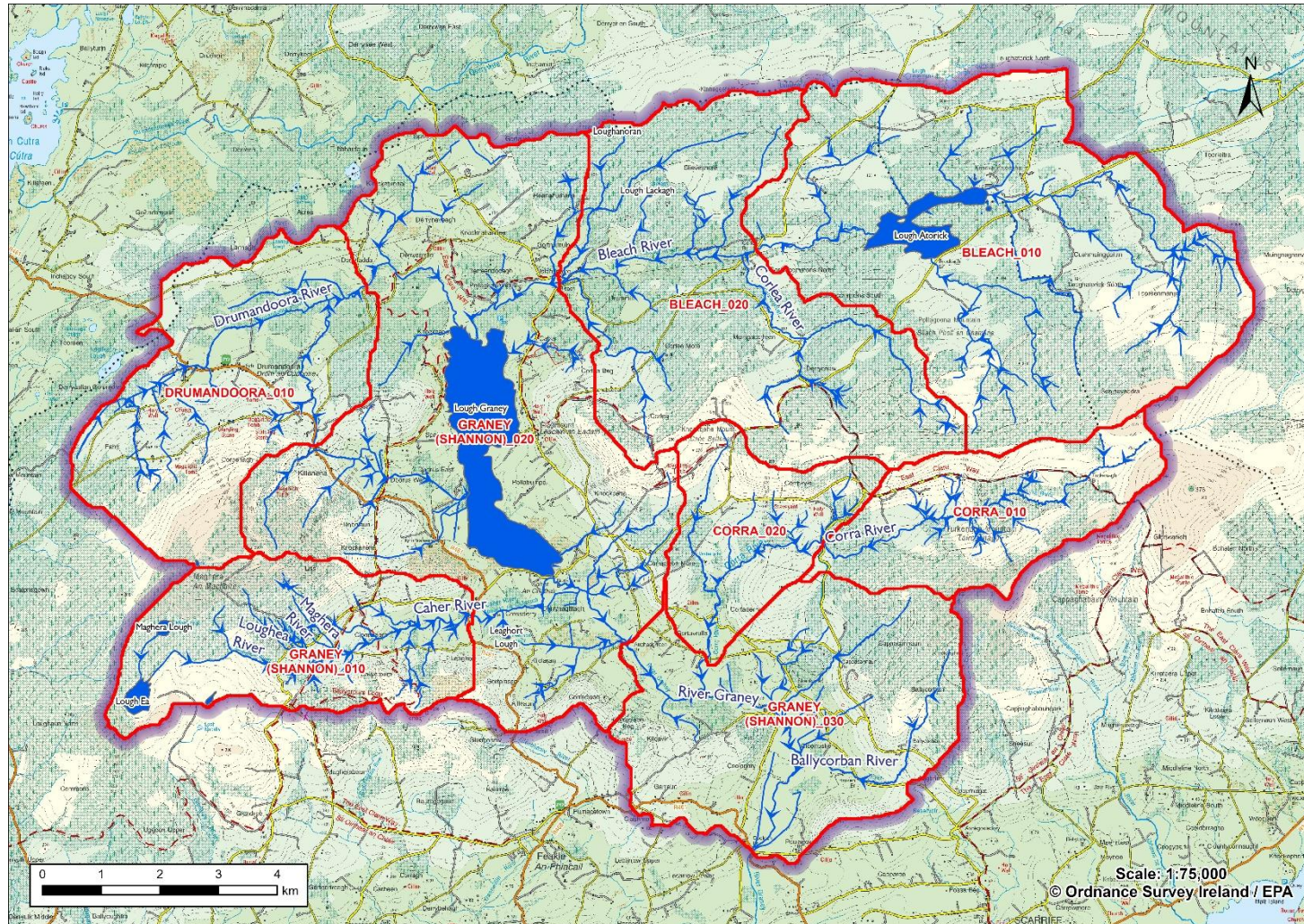
Catchments



A catchment is a specific area of the landscape that collects rainfall and allows it to flow through rivers, lakes and groundwater to reach the sea.

The health of water within a catchment reflects both the natural attributes and the human activities occurring within that specific area.

Graney Demonstration Catchment



- Graney sub-catchment is 174km²
- It consists of eight river waterbodies:
 - Bleach_010
 - Graney (Shannon)_010
 - Graney (Shannon)_020
 - Drumandorra_010
 - Corra_010
 - Bleach_020
 - Corra_020, and
 - Graney (Shannon)_030
- And 2 Lakes
 - Lough Atorick, and
 - Lough Graney

Desk Study

- Background
- Receptor information – water quality data/ assessments -> conclusions on the issue affecting water quality
- Pressure – EPA information, other assessments
- Pathways – how pollutants move from land to the river

Graney Waters of Life Demonstration Sub-catchment Desk Study Report



Lough Atonick on Bleach_010 on 27th September 2019 (Photo by: Aine Donnellan, LAWPRO)

Disclaimer:

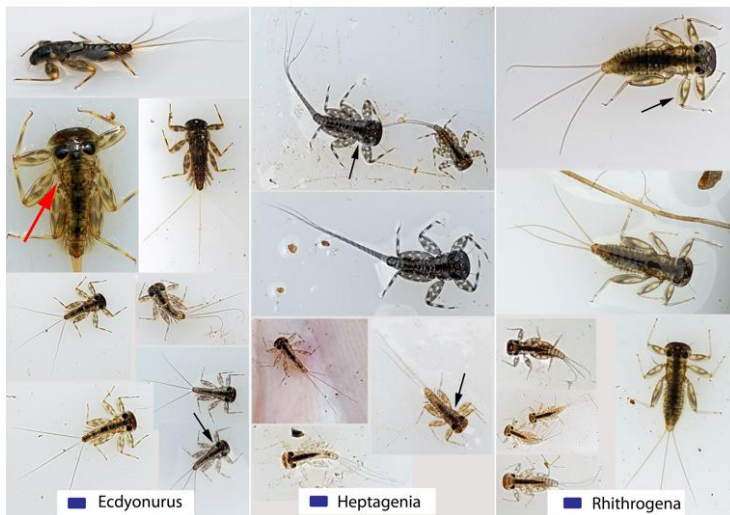
Although every effort has been made to ensure the accuracy of the material contained in this publication, complete accuracy cannot be guaranteed. The Local Authority Waters Programme (LAWPRO) nor the author(s) accept any responsibility whatsoever for loss or damage occasioned, or claimed to have been occasioned, in part or in full as a consequence of any person acting or refraining from acting, as a result of a matter contained in this publication.

Copyright ©LAWPRO, May 2022.

This report cannot be reproduced without the prior written consent of LAWPRO.

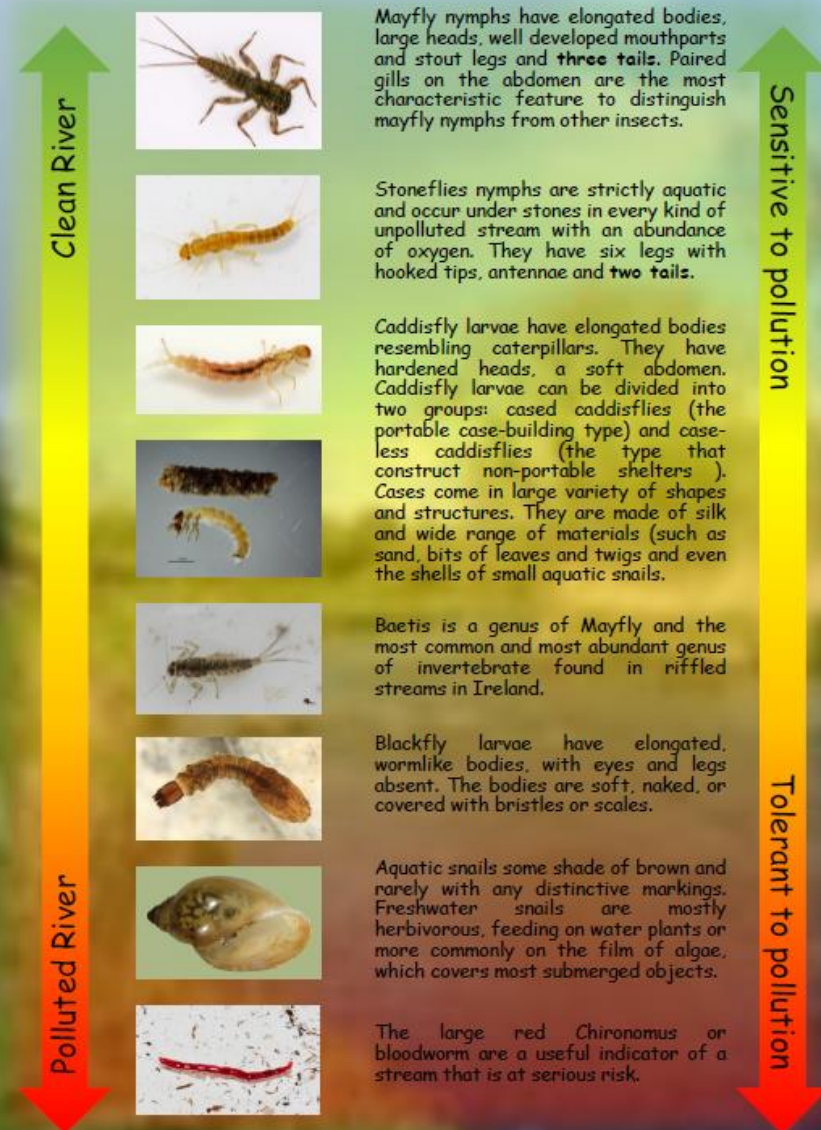
Measuring Water Quality

The Biological Indicators (INV)



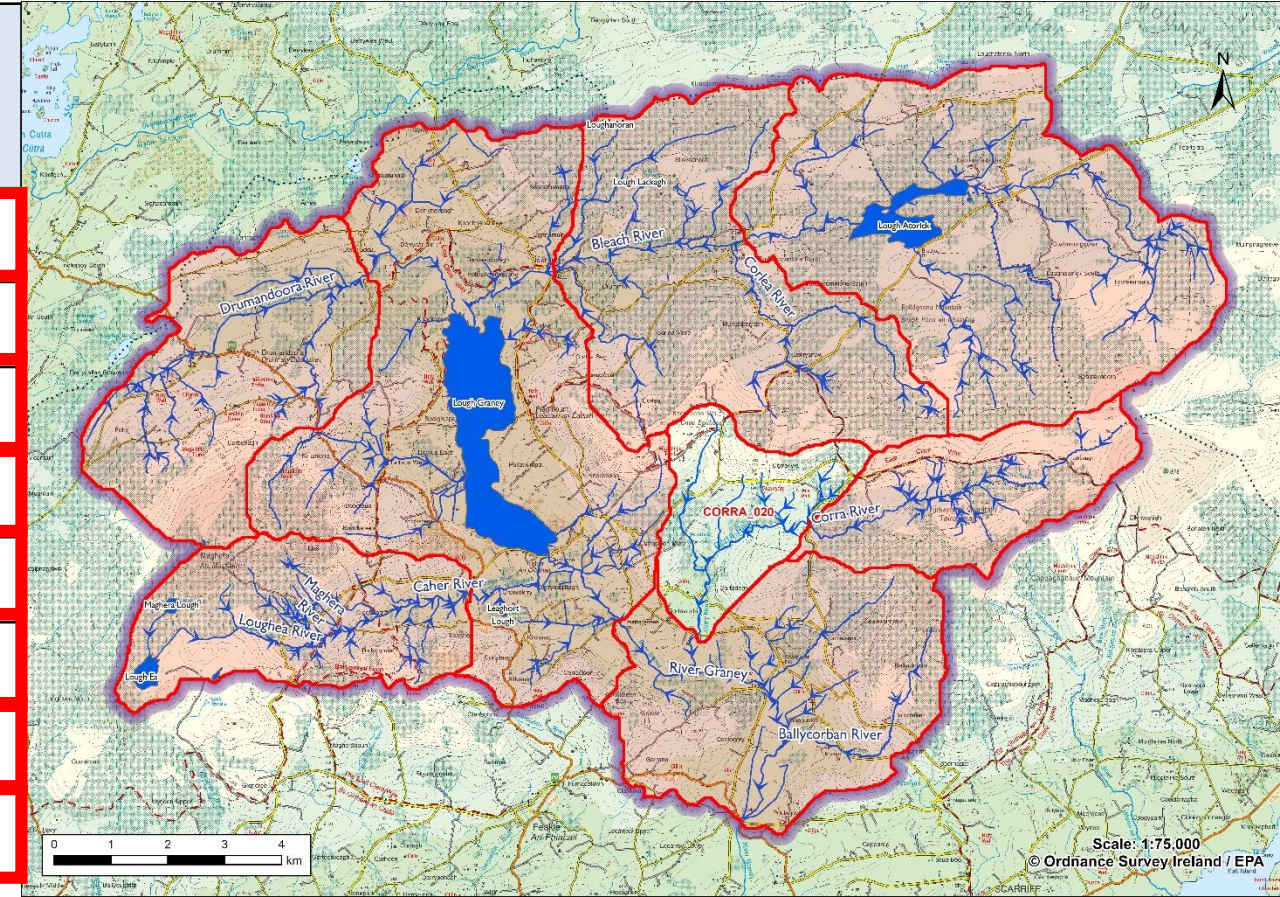
One out all out!!!!

Aquatic insects can be Indicators of Clean Rivers



Water Quality in Graney

WB name	High status obj.	Ecological Status				Significant Pressures
		2009	2012	2015	2018	
Bleech_010	No	U	G	P	G	-
Bleech_020	Yes	H	H	M	G	Forestry
Drumandorra_010	No	H	G	G	G	-
Graney (Shannon)_010	No	G	G	G	G	-
Graney (Shannon)_020	No	H	G	G	G	
Graney (Shannon)_030	Yes	H	H	H	G	Forestry
Corra_010	No	U	P	G	G	
Corra_020	Yes	H	H	H	H	



Immediate Next Steps

- You will see us in the catchment
- Assessment of the catchment
 - Commence October 2022
 - Identify all issue that may affect water quality
- Plan further detailed assessment
 - Catchment walks



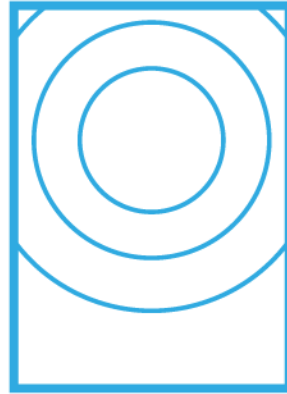
© Corra River, Corraklye - (DJ Lane / Áine Donnellan - LAWPRO)

Thank you for listening

Questions?



protect



restore



respect



sustain