

Waters of



Awbeg (Kilbrin) Demonstration Catchment

Water Quality and Assessment

Cormac Mc Conigley

12th October 2022



An Roinn Tithíochta,
Rialtais Áitiúil agus Oidhreachta
Department of Housing,
Local Government and Heritage

Presentation Contents

- Introduction to Catchments
- The Awbeg (Kilbrin) Catchment
- Water Quality Measurements
- Water Quality in the Awbeg (Kilbrin) Catchment
- Next Steps – field work



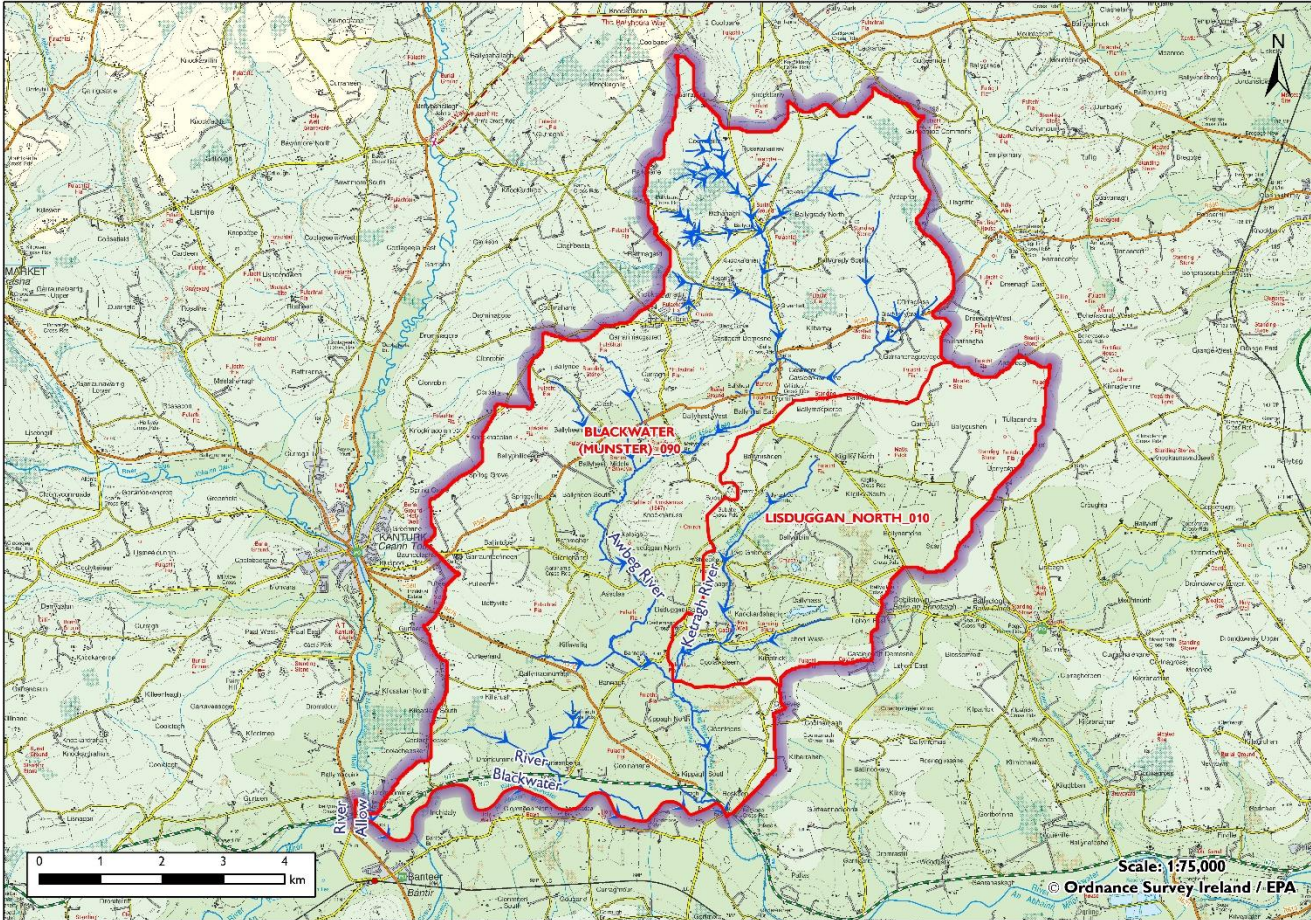
© Awbeg at Bannagh Bridge Cormac Mc Conigley

Catchments

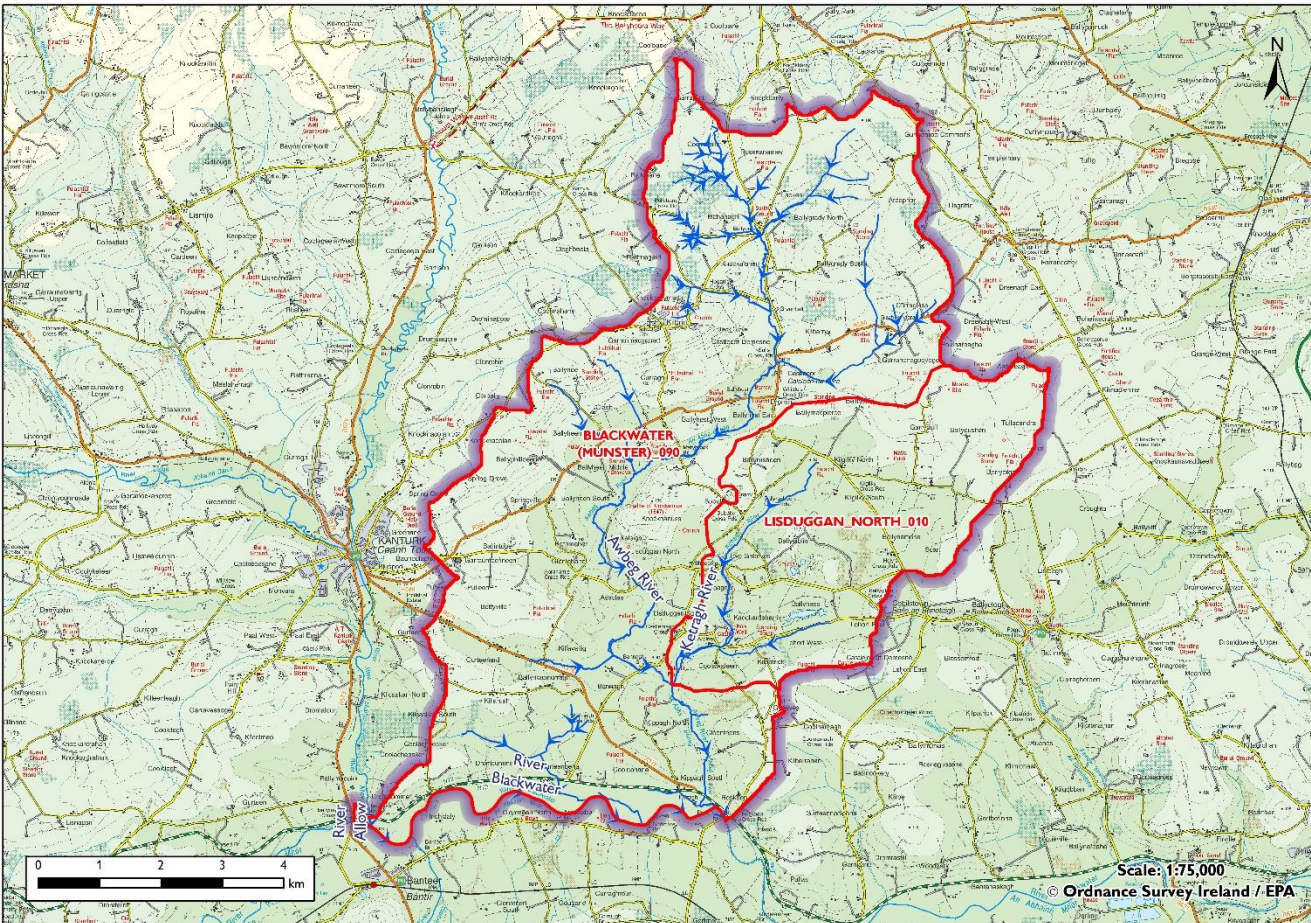


A catchment is a specific area of the landscape that collects rainfall and allows it to flow through rivers, lakes and groundwater to reach the sea.

The health of water within a catchment reflects both the natural attributes and the human activities occurring within that specific area.



Awbeg (Kilbrin) Demonstration Catchment



- Awbeg (Kilbrin) sub-catchment is 73km²
- It consists of two river waterbodies:
 - Lisduff_North_010
 - Blackwater (Munster)_090

Desk Study

- Background
- Receptor information – water quality data
- Pressure – EPA information
- Pathways – how pollutants move from land to the river

Awbeg (kilbrin) Waters of Life Demonstration Subcatchment Desk Study Report



© Awbeg Catchment - (Catherine Seale, LAWPRO)

Disclaimer:

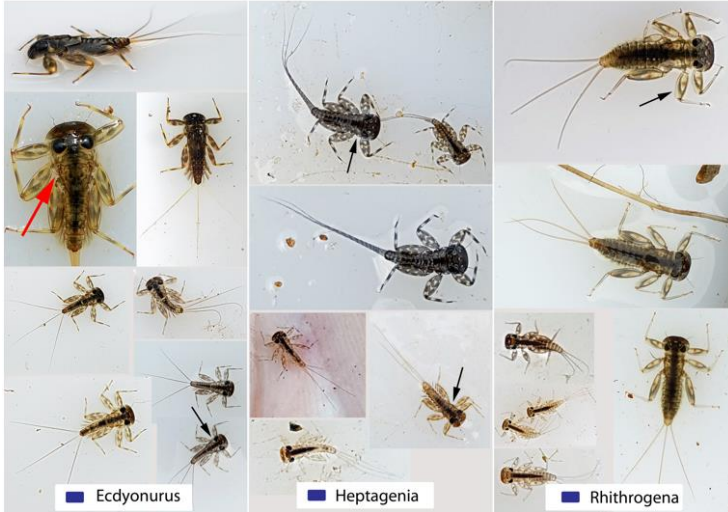
Although every effort has been made to ensure the accuracy of the material contained in this publication, complete accuracy cannot be guaranteed. The Local Authority Waters Programme (LAWPRO) nor the author(s) accept any responsibility whatsoever for loss or damage occasioned, or claimed to have been occasioned, in part or in full as a consequence of any person acting or refraining from acting, as a result of a matter contained in this publication.

Copyright ©LAWPRO, July 2021.

This report cannot be reproduced without the prior written consent of LAWPRO.

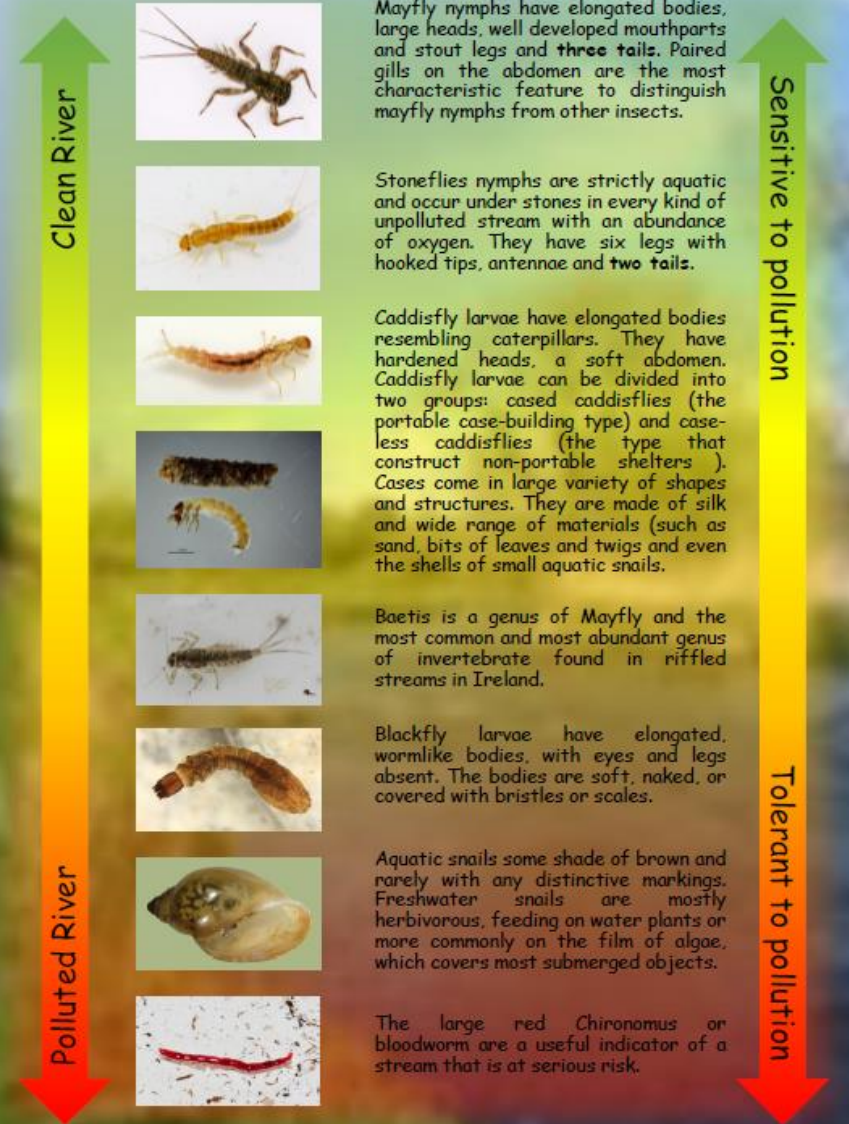
Measuring Water Quality

The Biological Indicators (INV)



One out all out!!!!

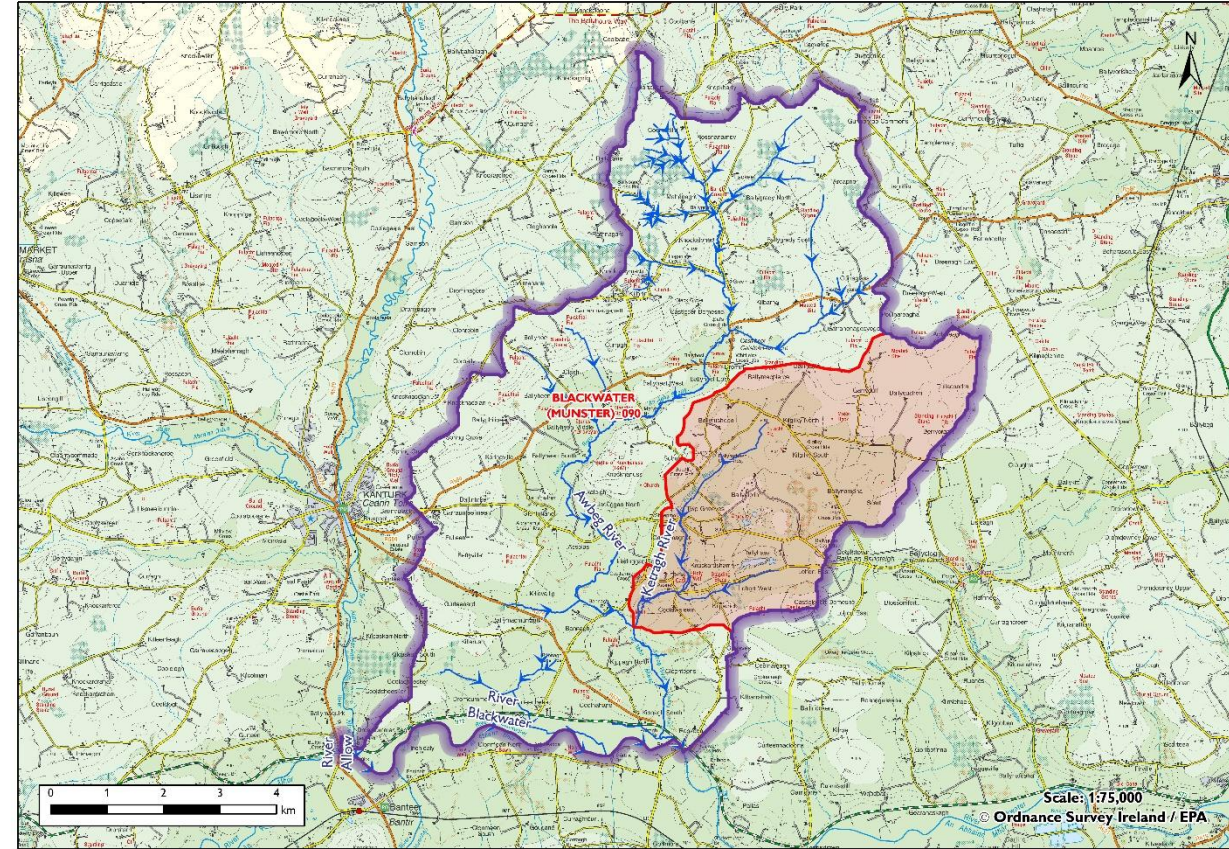
Aquatic insects can be Indicators of Clean Rivers



Water Quality in Awbeg (Kilbrin)



WB name	High status obj.	Ecological Status				Significant Pressures
		2009	2012	2015	2018	
Lisdugagan_North_010	No	U	U	U	U	
Blackwater (Munster)_090	Yes	H	G	G	G	Agriculture HYMO



Immediate Next Steps

- You will see us in the catchment
- Assessment of the catchment
 - Commence October 2022
 - Identify all issue that may affect water quality
- Plan further detailed assessment
 - Catchment walks



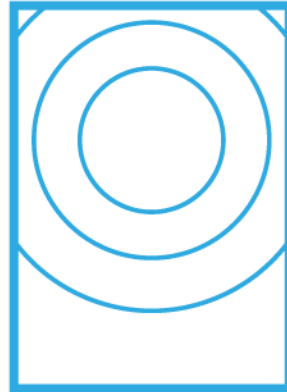
© Awbeg River at Ardine Bridge - (David Hegarty / Paul O'Callaghan, LAWPRO)

Thank you for listening

Questions?



protect



restore



respect



sustain