



Co-funded by
the European Union

Waters of LIFE Advisor Training

Module 5: Supporting Actions

May 2025

1. What are they?
2. What is the point of them?
3. The list
4. Scenarios
5. The process
6. Exercise



Demonstration at National Ploughing C'ship



Tree planting action

1. Supporting actions are voluntary.

They:

- Improve habitat quality
- Address a specific risk to water quality
- Are funded

They are identified through:

- Runoff risk assessment
- Habitat scoring

2. Supporting actions improve score of a plot

- More money for farmer
- Improvement to habitat
- Improvement to water quality



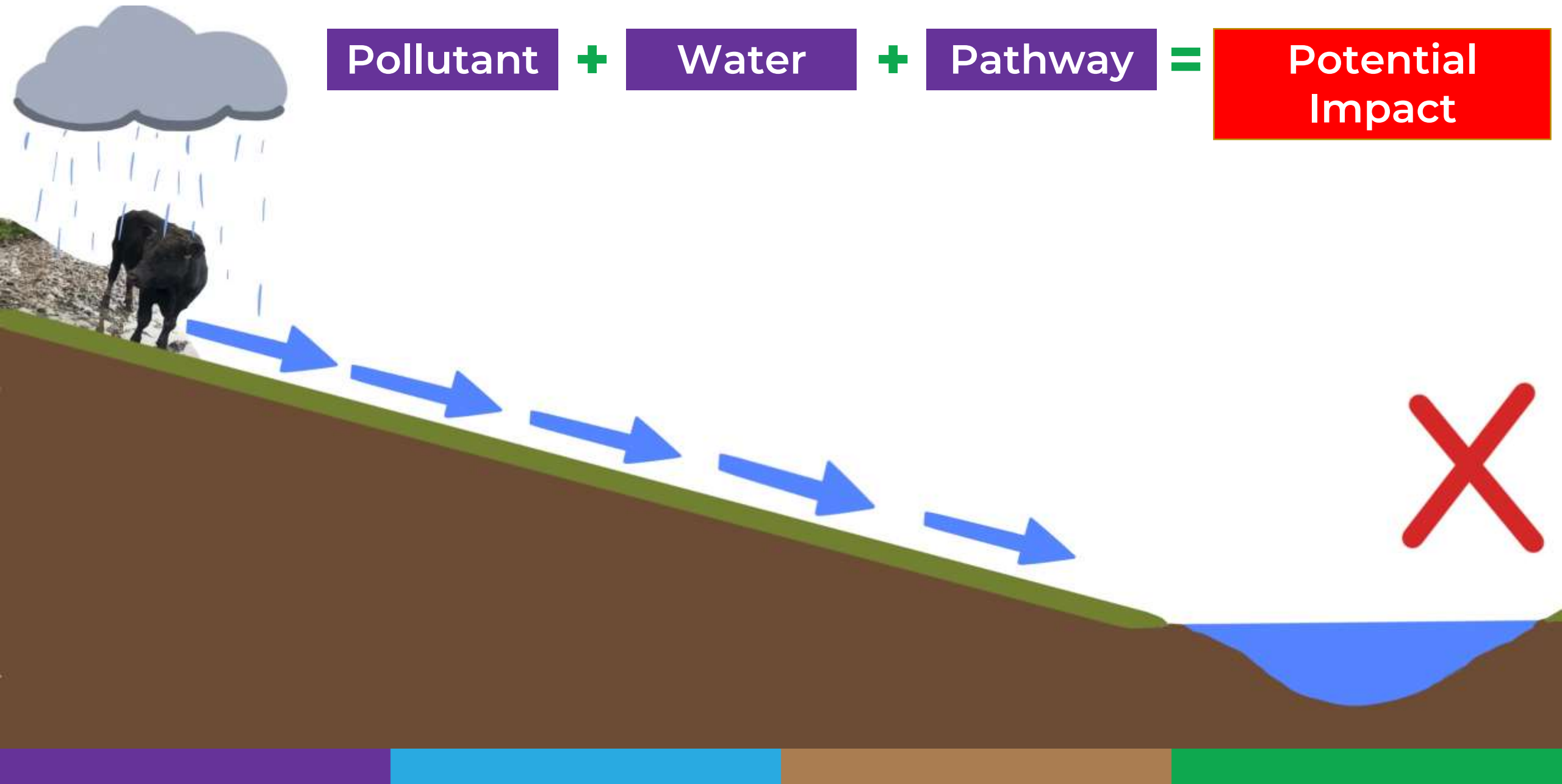
Martin Gavin
Pearl Mussel Project



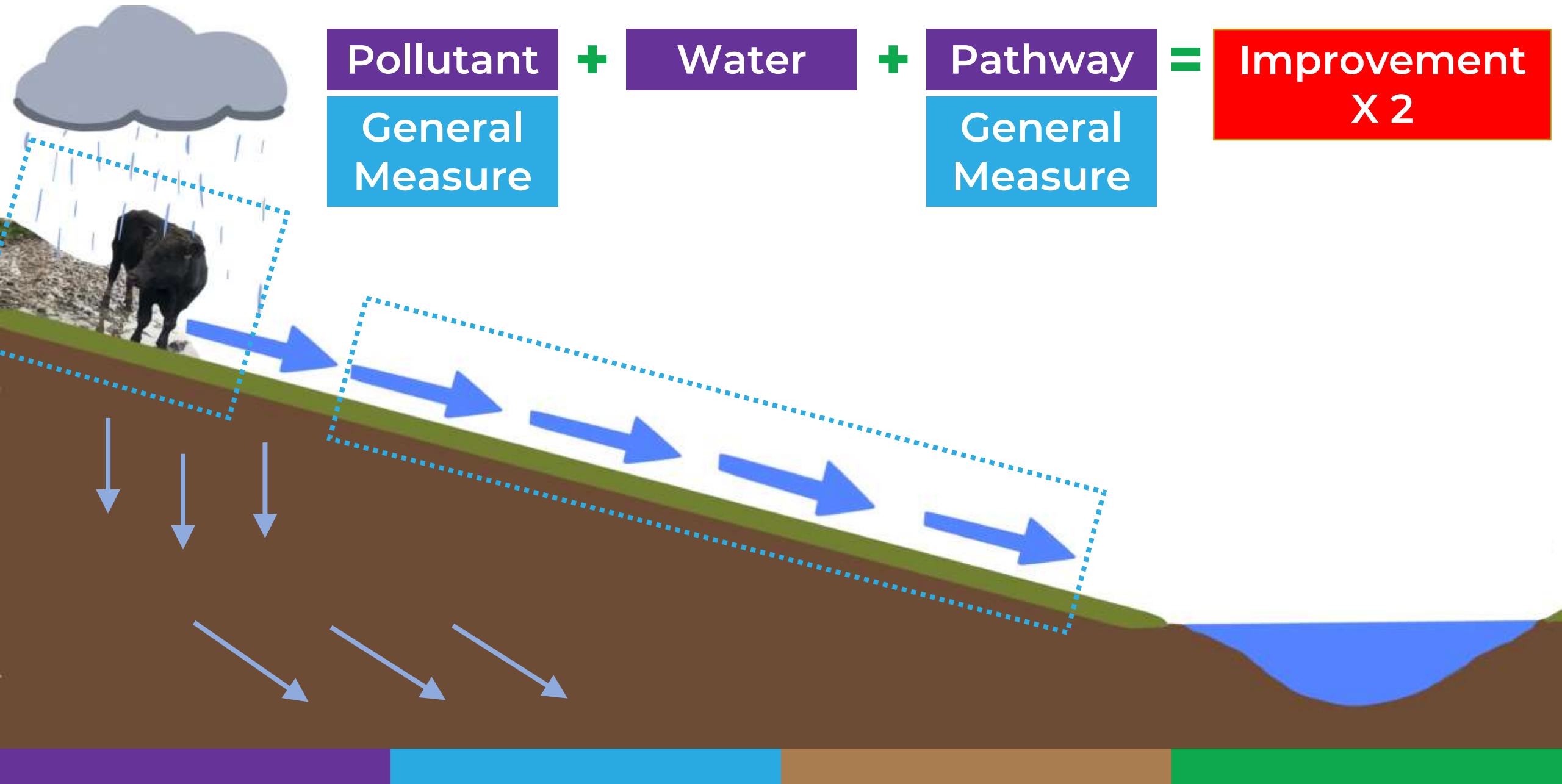
Spatially Targeted Buffer

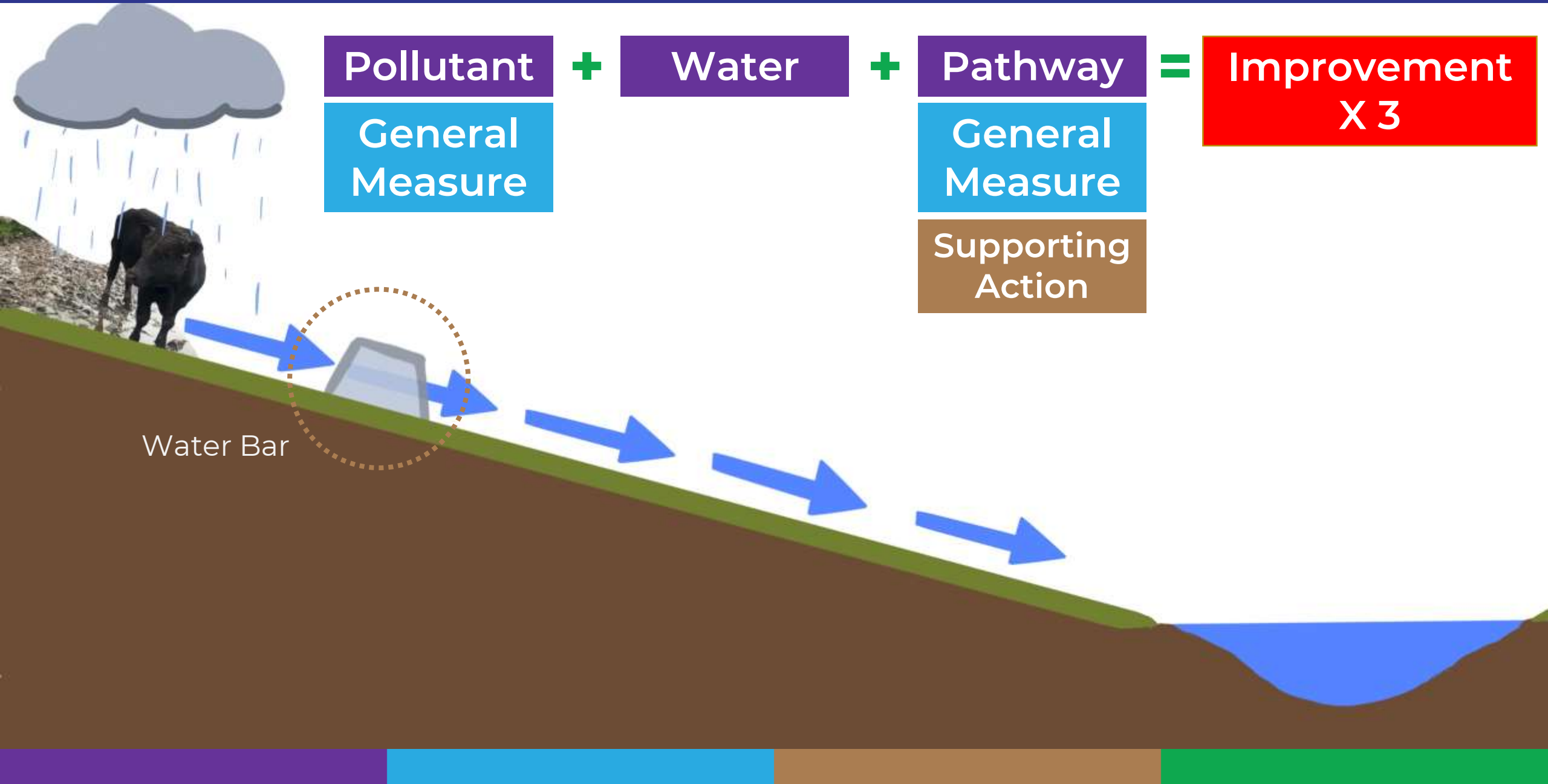
3. Supporting actions address specific issues identified during runoff risk Assessment

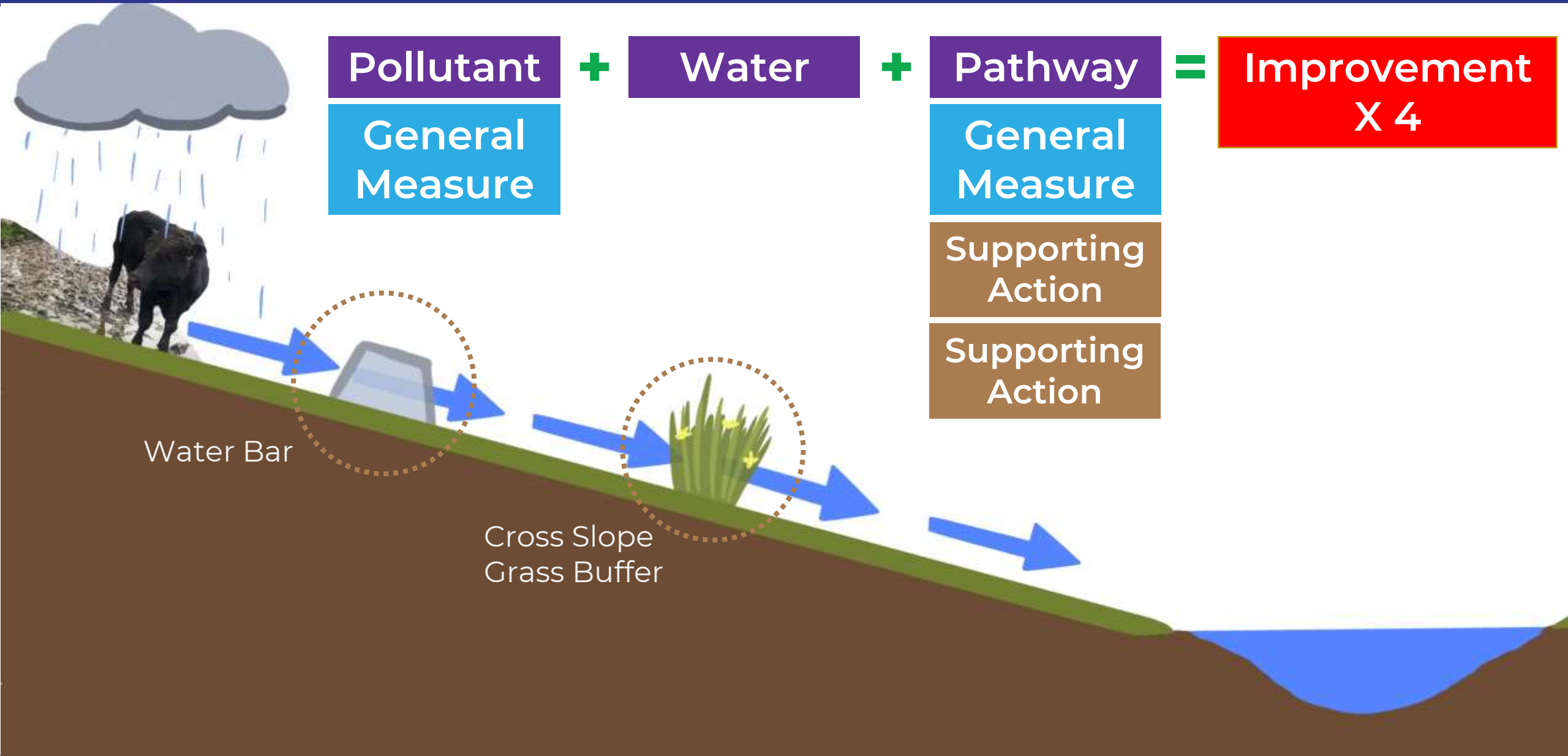
Specific concern identified can be mitigated to directly improve water quality.

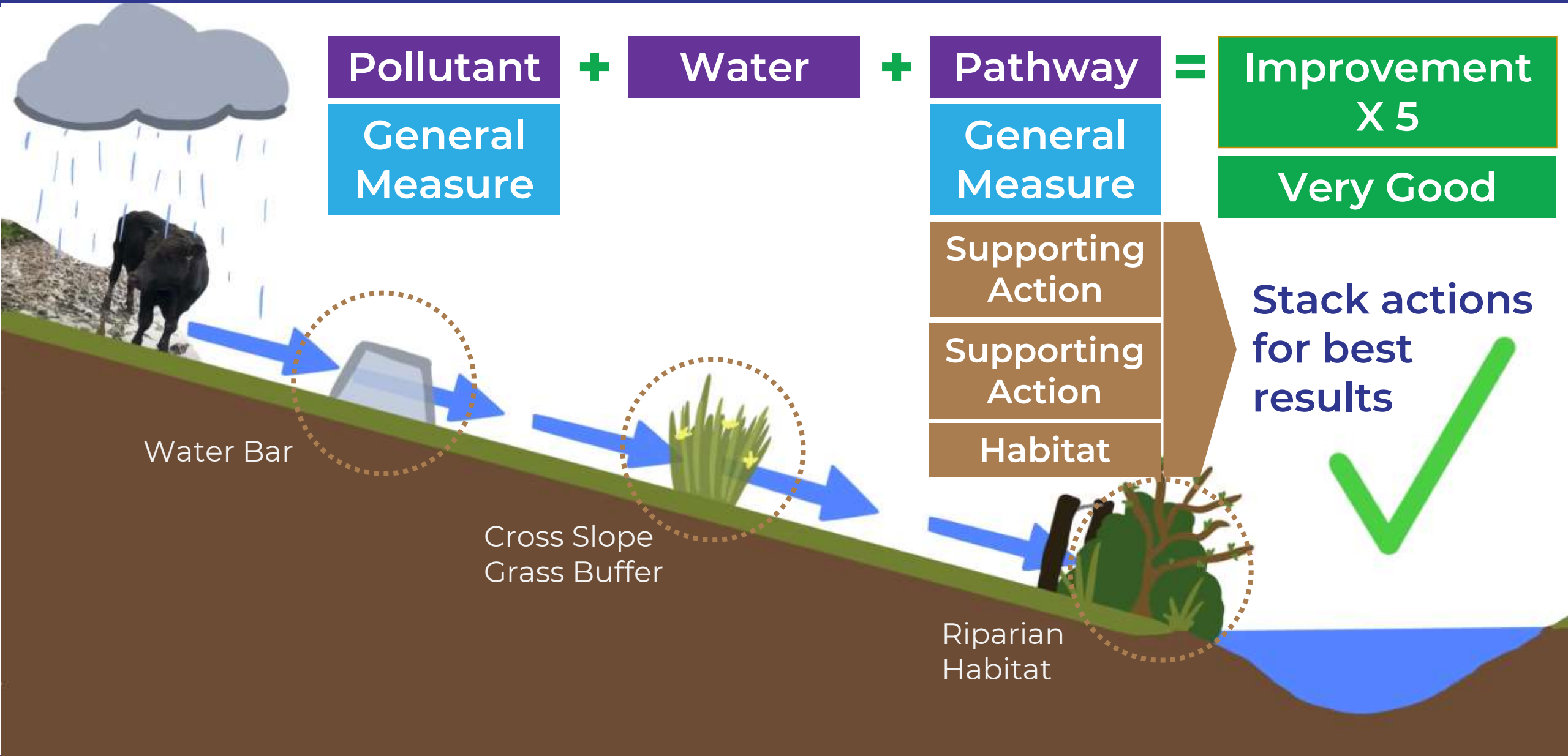


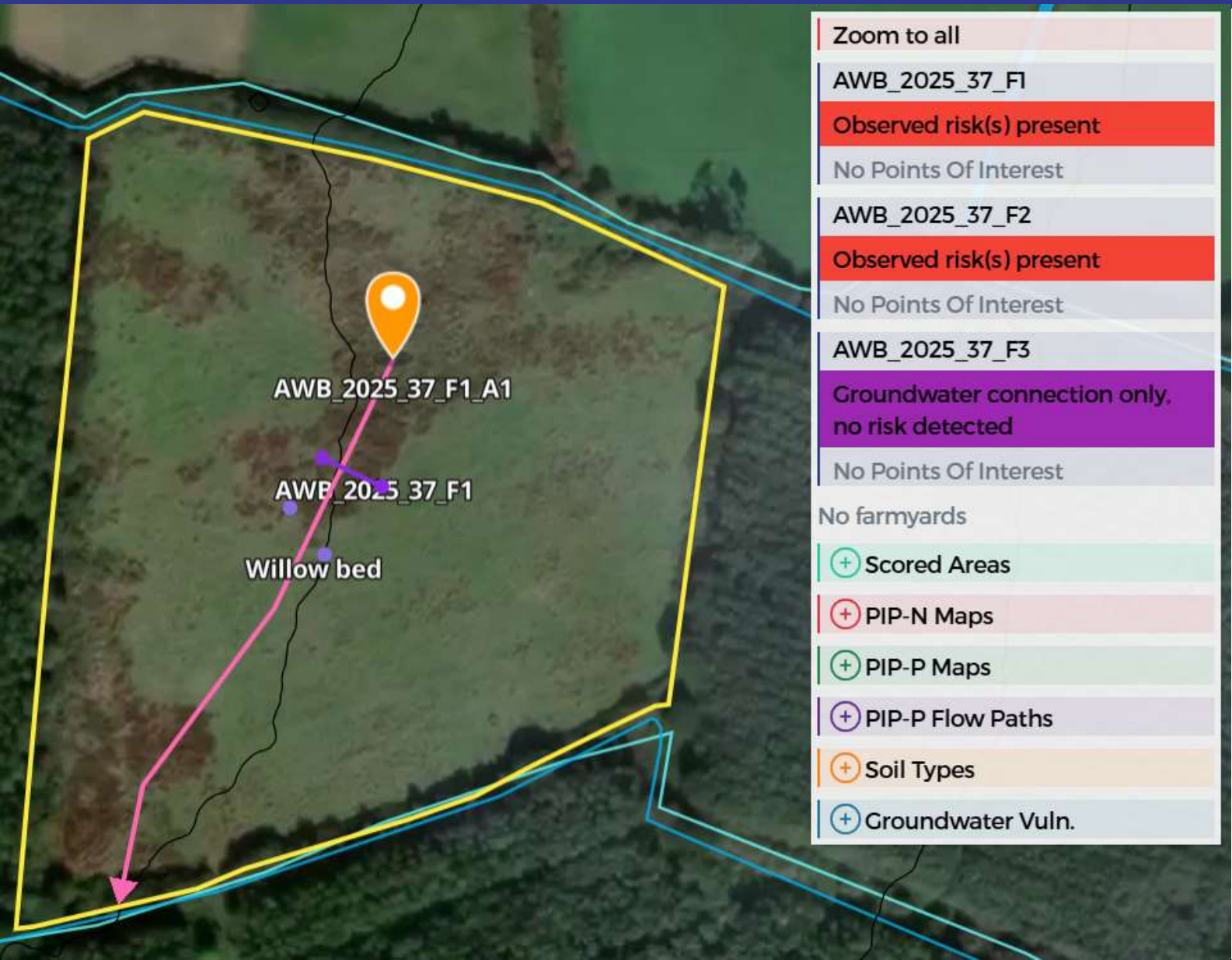
HOW DO SUPPORTING ACTIONS WORK?











LIST OF 34 SUPPORTING ACTIONS

Farm Infrastructure						Watercourse Crossing					
01	Permanent Single Strand Electric	5	2000	m	€2.77	18	Culvert	1	5	unit	€500
02	Sheep Fence	5	2000	m	€6.75	19	River, Stream Crossing/Bridge	1	1	50% of cost	Max €5000
03	Sheep Fence Mountain Rate	5	2000	m	€11.25	Water Provision					
04	Barb Wire Fence	5	2000	m	€4.50	20	Solar Pump	1	2	unit	€2500
05	Deer Fence	5	2000	m	€22.50	21	Water Storage Tank	1	2	unit	€400
06	Solar Powered Electric Fencer	1	2	unit	€634	22	Pasture Pump	1	5	unit	€400
07	Gateway Measures	1	10	unit	€360	23	Water Trough	1	5	unit	€300
Pathway Interception Measures						24	Water supply piping and fittings	1	n/a	unit	€150
08	Waters Bars	1	10	unit	€213	Invasive Species					
09	Vegetated Bunded Drain	1	3	unit/yr	€1000	25	Non Native Invasive Species	Case by case basis			
10	Earth Bund	1	5	25mx0.5m	€300	26	Conifers (high cover)			ha	€1,481.00
11	Sediment Trap	1	3	unit/yr	€120	27	Conifers (medium cover)			ha	€740.60
12 A	Hedgerow Establishment- with earth bund	10	250	m	€24.37	28	Conifers (low cover)			ha	€359.10
12 B	Hedgerow Establishment – without earth bund	10	250	m	€21.17	29	Conifers (sparse cover)			ha	€66.70
13	Grassland Buffer Cross-slope	10	100	m	€5.45	Other Supporting Actions					
14 A	Spatially Targeted Riparian Buffer 0.01-0.04ha	1	5	unit	€400 / €228*	30	Water Table Management on Peat soils	Direct payment by project			
14 B	Spatially Targeted Riparian Buffer 0.05-0.1ha	1	5	unit	€915/€418*	31	Green Hay	1	5	ha	€250
14 C	Spatially Targeted Riparian buffer 0.11 to 0.2ha	1	5	unit	€1,656/787*	32	Contractor Mobilisation Fee	1	1	applicant	€200
15	Tree Planting	5	100	whip	€16	33	Bespoke Measures	Case by case basis			
16	Willow Beds	30	200	m	€34	34	Host Farmer Payment	1	5	event	€180
17	Small Scale Wetland Pond	1	3	unit	€800 / €627						



Poaching around water trough



Cleared drain



Water Trough

New Water Trough

- Placed 20m from surface waters
- Solid, level surface
- Multiple troughs in field for rotational grazing
- Up to €300/unit
- Piping & fittings paid extra to trough

Solar Pump

- Permanently fenced surround
- Ensure adequate supply in well
- €2,500/unit; Max 2 units



Vegetated bunded drain

- Slow the flow and allows sediment settle
- NOT to be used as livestock crossing
- €1000/ vegetated bunded drain
- Min 20m – max 50m



Credit: Farming for Water EIP

Natural Drain Vegetation

- No cost
- Increases habitat score every year

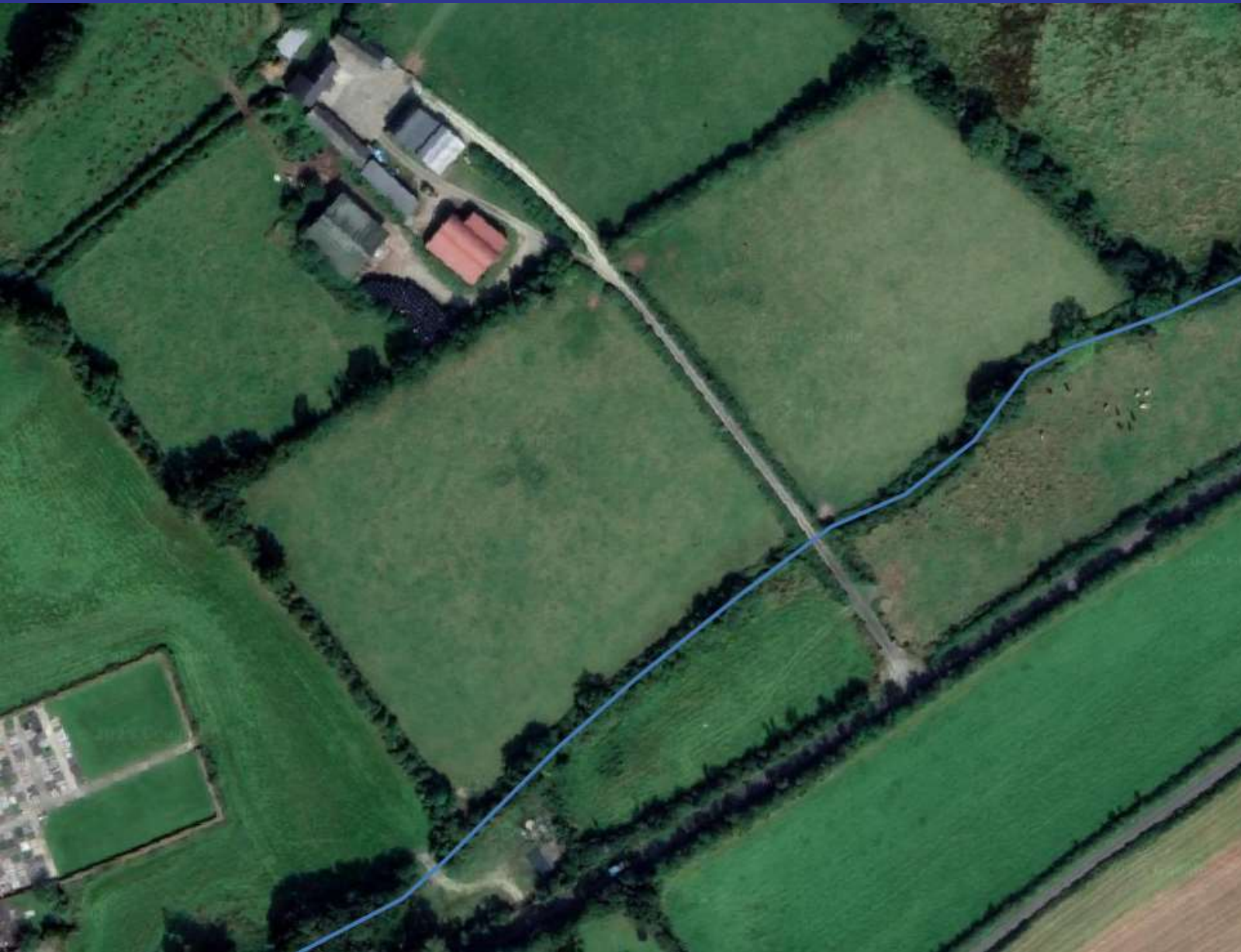




Outcome:

- Stacked supporting actions paid for
= **Reduced runoff risk**
- Increased payments to farmer for habitats

SCENARIO 2: FARM ROADWAY DOWN TO RIVER



Water Bar

€213 per unit (max of 10)



Sediment Trap

€120 per unit/yr (max of 3)



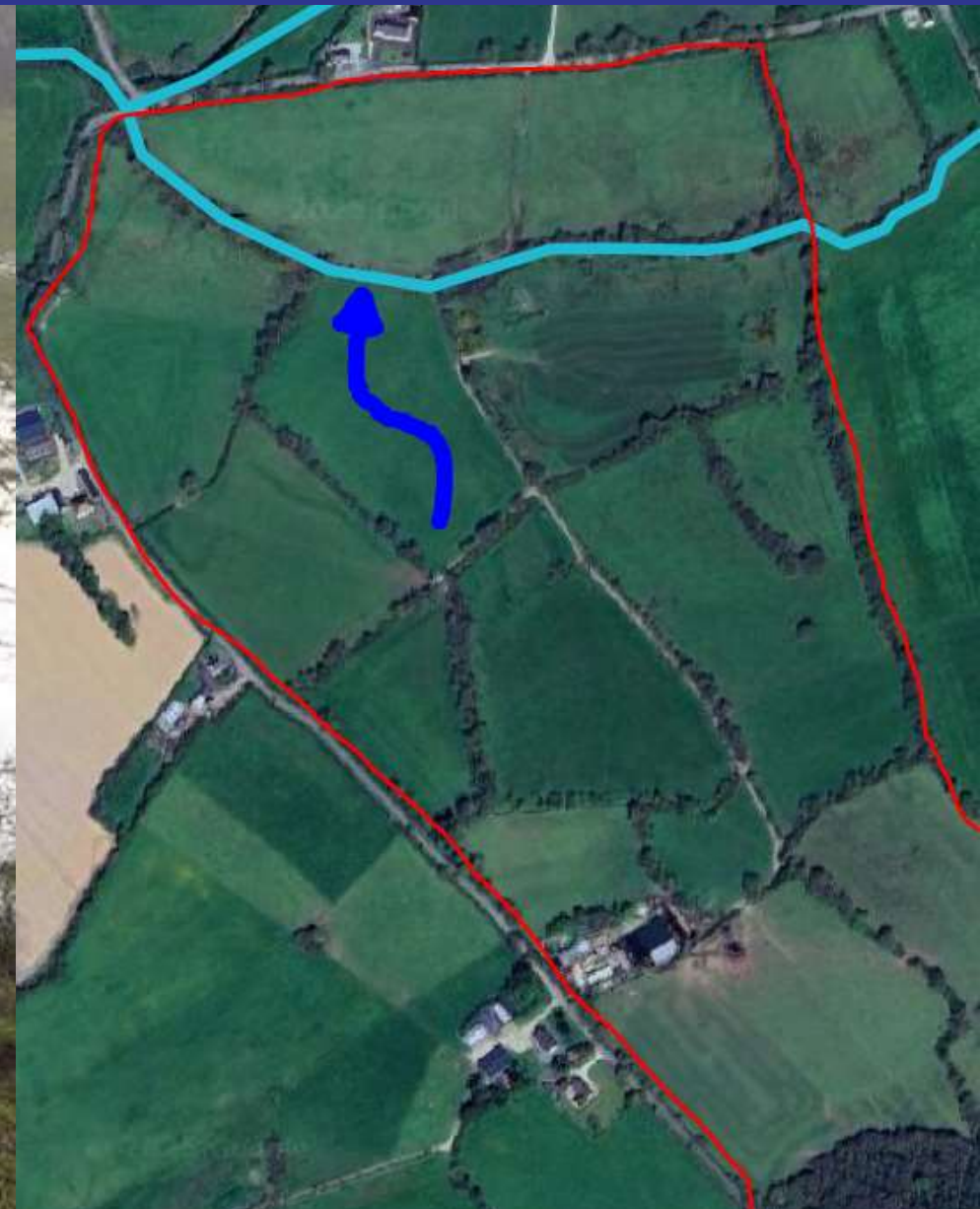
SCENARIO 2: FARM ROADWAY DOWN TO RIVER



SCENARIO 2: FARM ROADWAY DOWN TO RIVER



SCENARIO 3: SURFACE WATER PATHWAY IN A HEAVILY STOCKED FIELD



SCENARIO 3: SURFACE WATER PATHWAY IN A HEAVILY STOCKED FIELD



Demonstration at National Ploughing C'ship

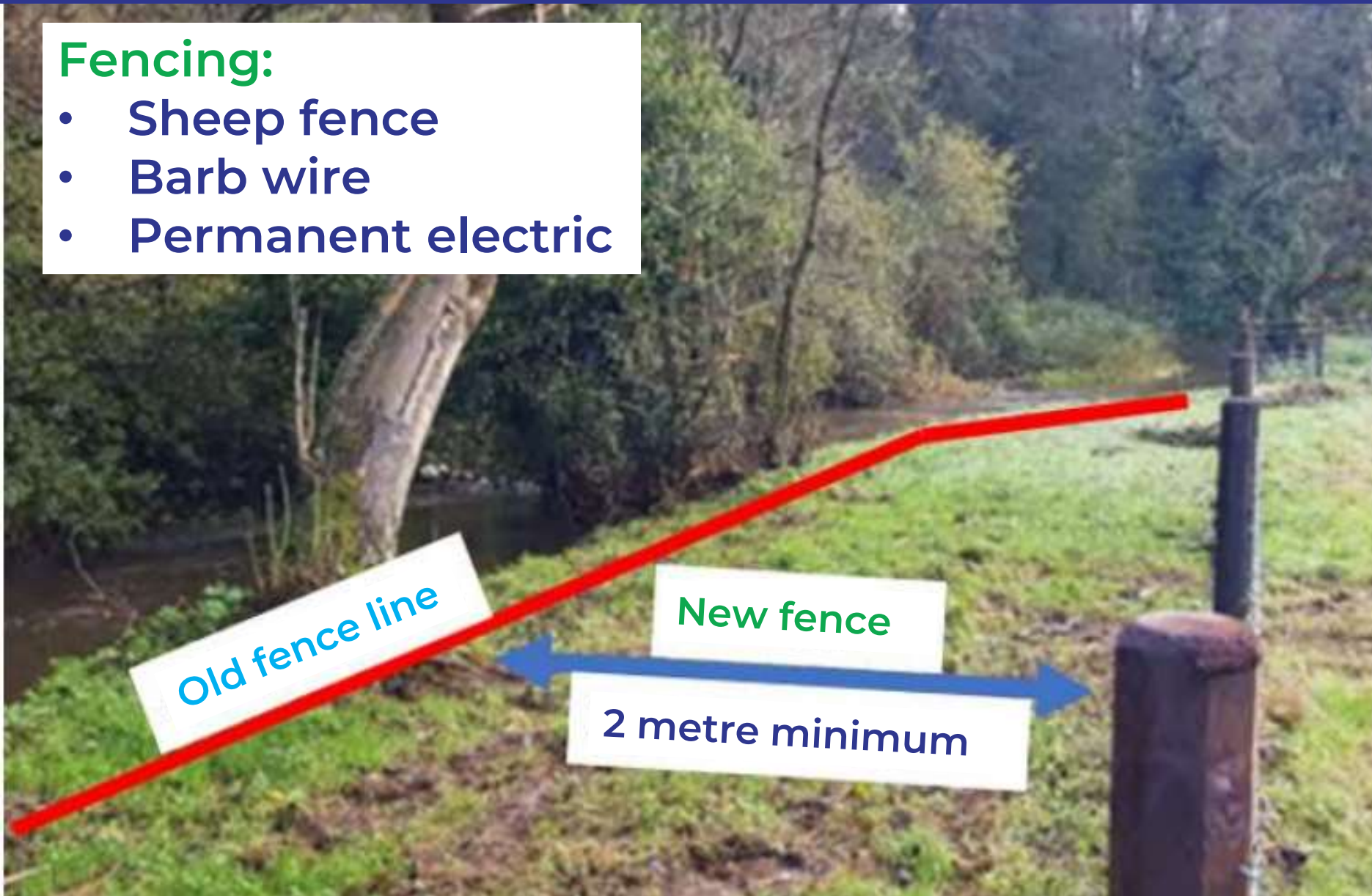
Grassland buffer (cross slope):

- Fenced - 3m width
- Unfertilised
- NOT farm tracks
- €5.45/m



Fencing:

- Sheep fence
- Barb wire
- Permanent electric



- If replacing old fence, new fence has to move at 2m+ further into field
- Fence must be fit for purpose
- Multiple rates, see booklet for further details



Tree planting:

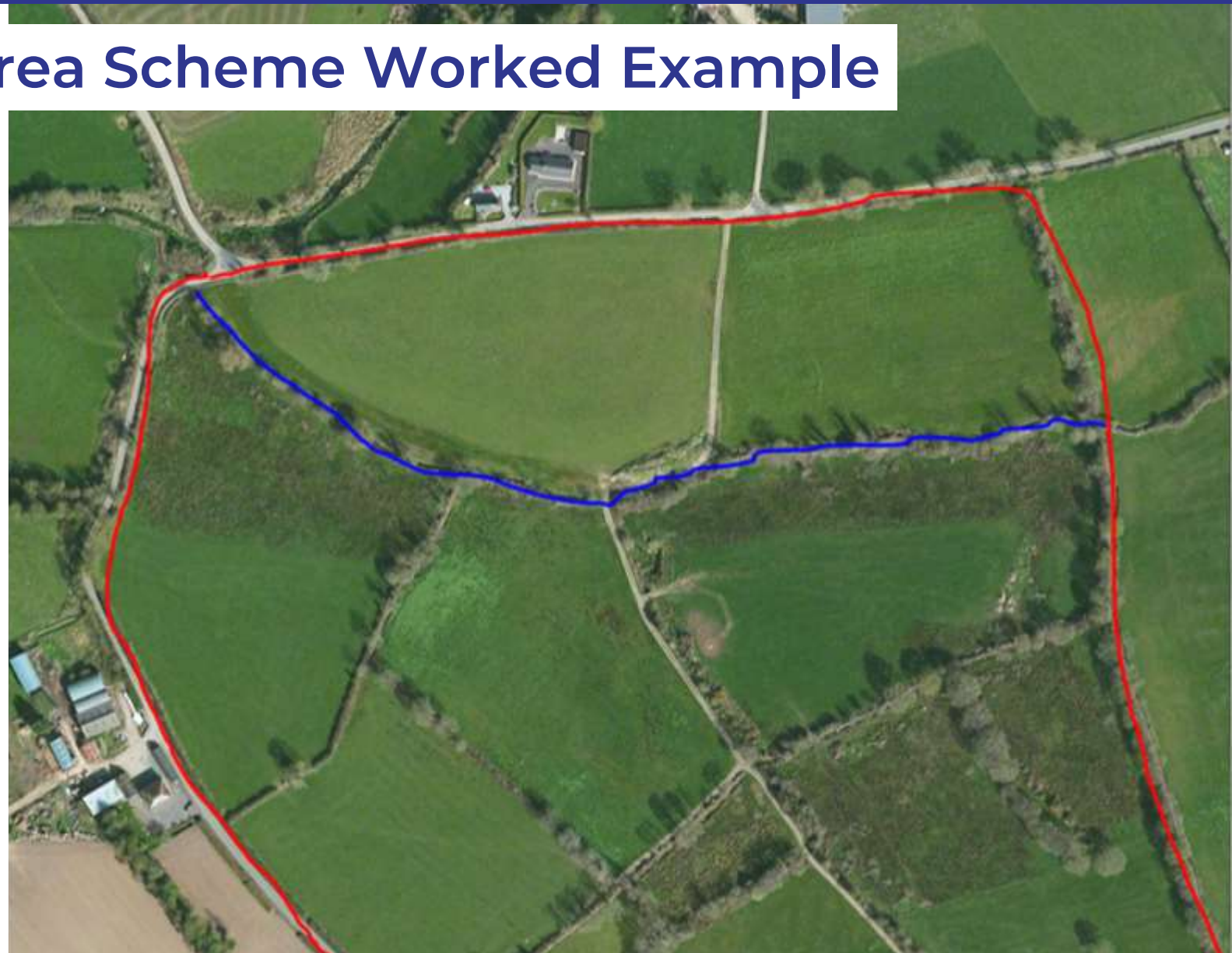
Trees can be planted along riverside to increase score and buffering capacity

- €16/whip with a max of 100
- Willow planting €34/m at a max of 200m
- Native Tree Area Scheme

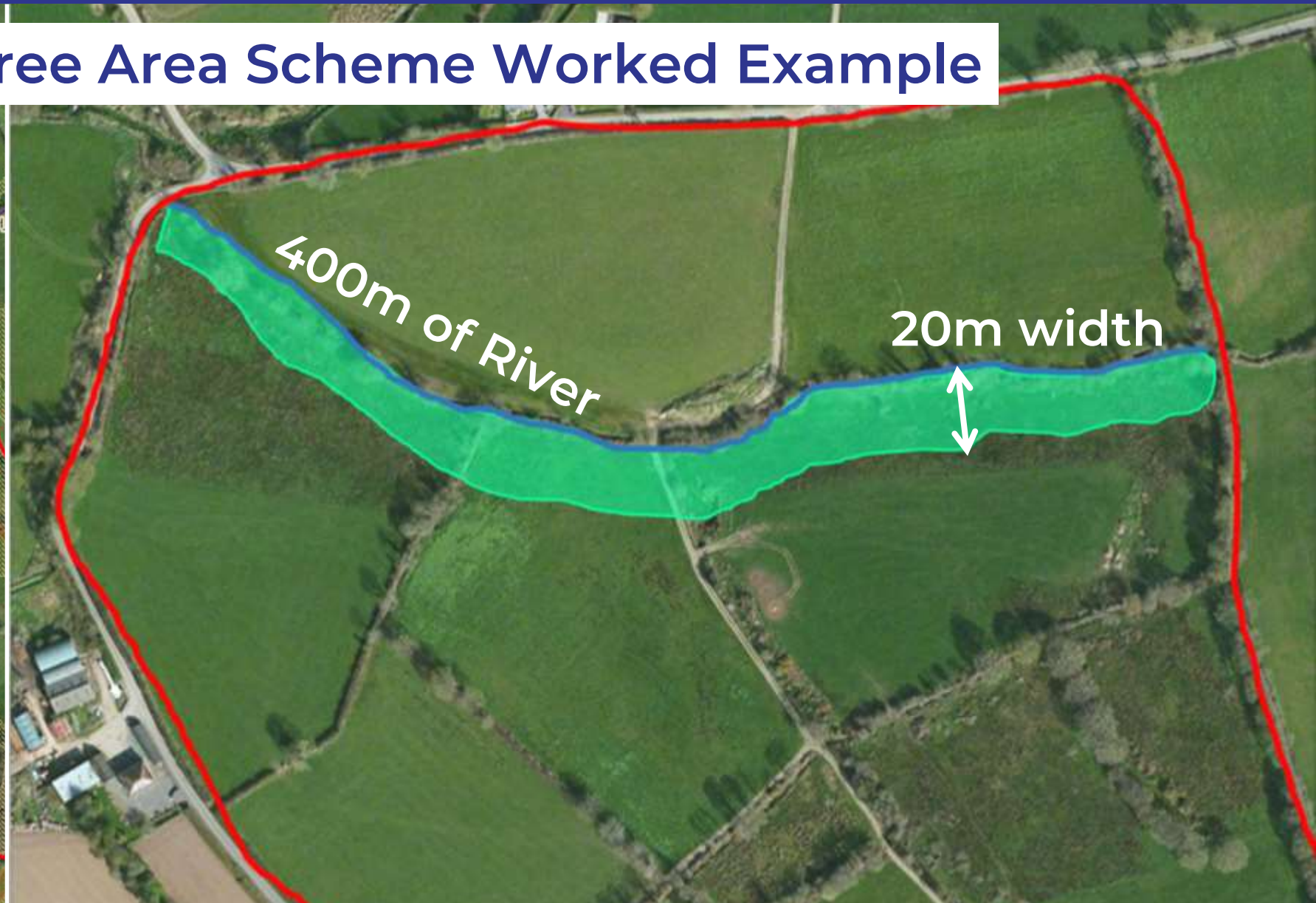
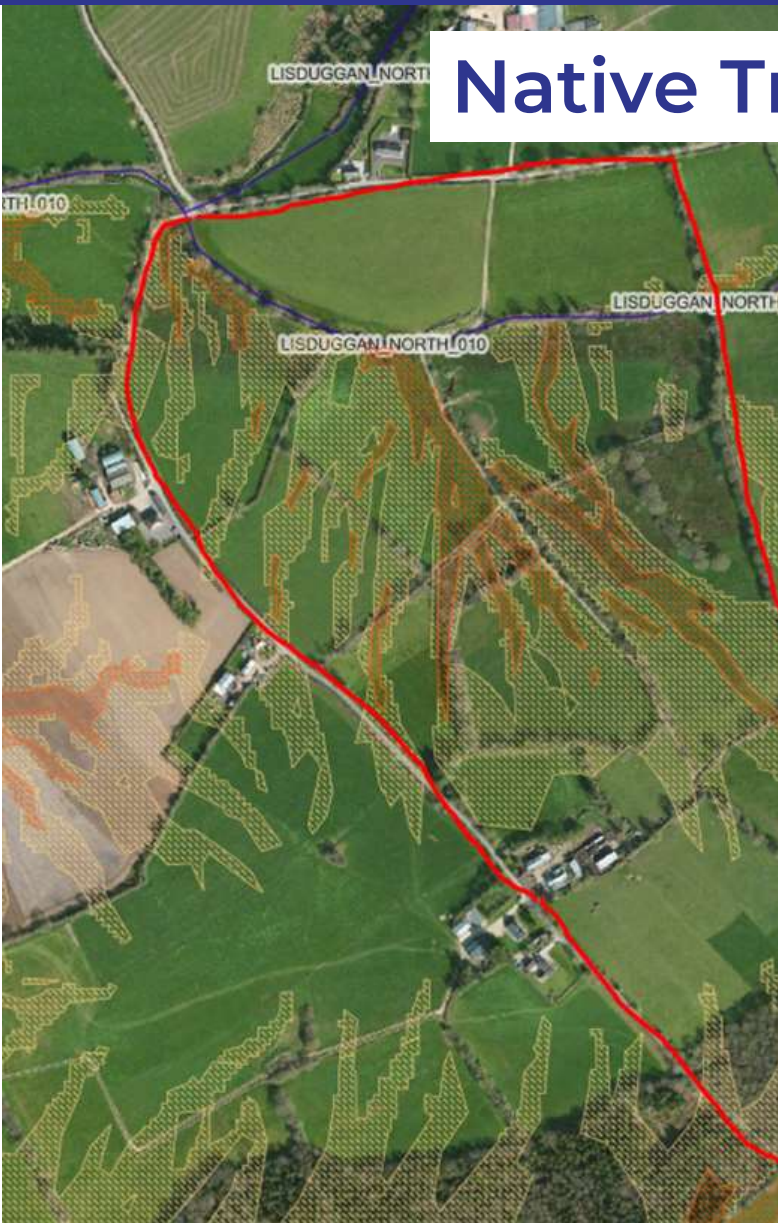
Native Tree Area Scheme Worked Example



Native Tree Area Scheme Worked Example



Native Tree Area Scheme Worked Example



Native Tree Area Scheme Worked Example

- You get your first grant payment after you plant your trees
- The second payment can be claimed at least 4 years after planting
- Annual premium is for 10 years

PAYMENT TYPE	STANDARD RATES	PAYMENT TYPE	AMOUNT
Grant 1 rate (Euro/ha)	€5,058	Grant 1	€4,046.40
Grant 2 rate (Euro/ha)	€1,686	Grant 2	€1,348.80
Annual Premium (Euro/ha)	€2,284	Annual Premium over 10 years*	€18272
IS 436 Stock Fencing Grant	€5.50/m	IS436 Stock Fencing Grant at 400m	€2200
Deer Tree Shelter Grant	Up to €1,600/ha	Deer Tree Shelter Grant at 0.9 ha	€1280
		Total	€27146

Waters of LIFE have taken on a contracted forester
They will help with grant applications
They will guide implementation of measures on the ground as identified



Bespoke Measures

Farmers know what works for them and their land.

We welcome innovative approaches that:

- Reducing risk to water
- Improve habitat score.

Suggest them and we will see what we can fund





Host Farmer Payment

€180 per day

Farmer provides:

- Access
- Shelter (shed)
- Parking
- Consent for photos



Contractor Mobilisation

Where contractor
is needed on site

Project can pay
directly

Or farmer can avail
of €200 euro

**Project led supporting actions
have larger scale actions.**

Still suggested by Farm Advisor

**After first round of habitat
assessments**

Contractor mobilisation

Examples:

- **Drain Blocking**
- **Bracken Management**
- **Invasive species management**



Balsam Bashing
Credit: Tame Valley Wetland

Drain Blocking
Assessment required

Credit: Pearl Mussel Project



Before



After



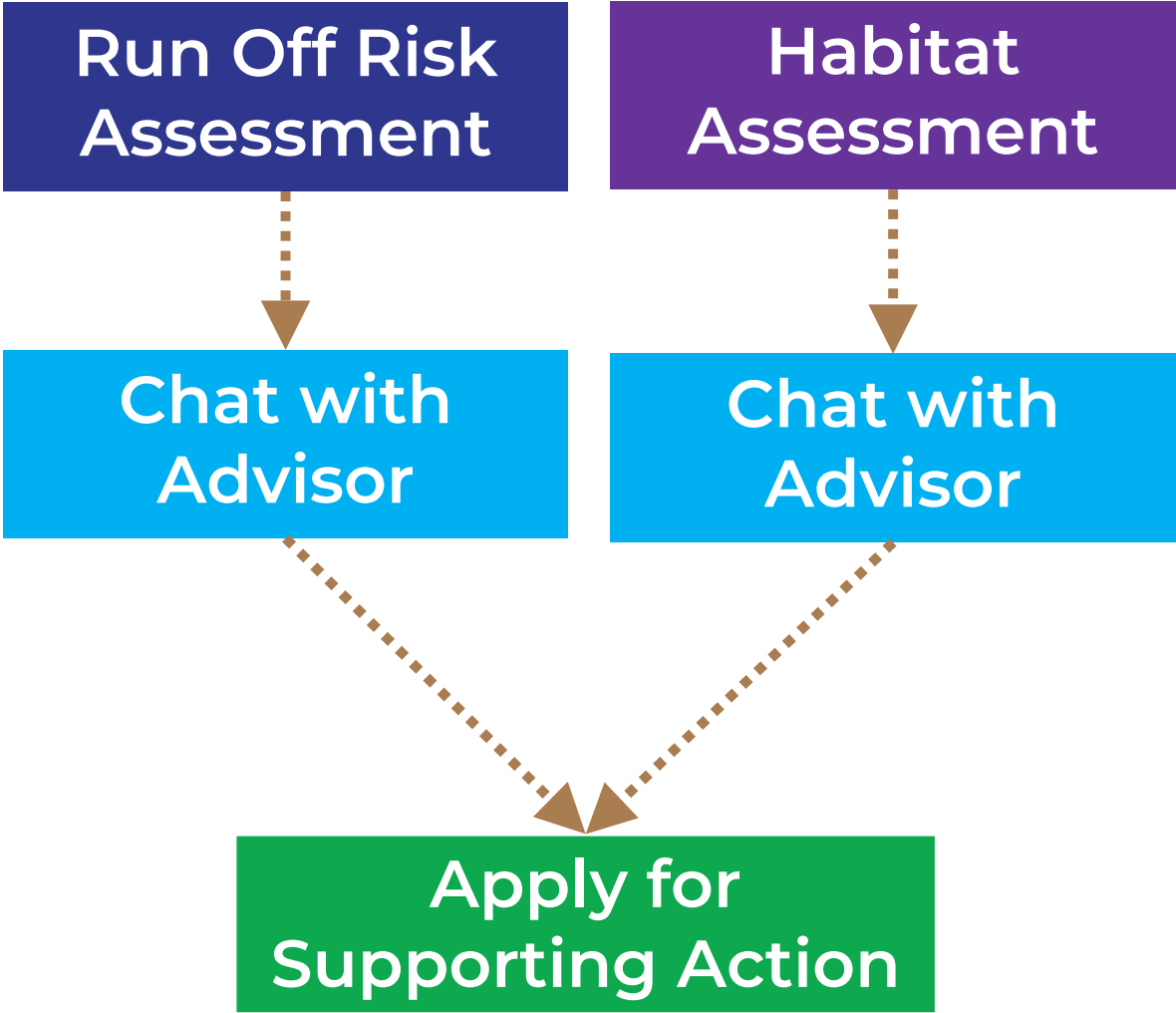
Instream works

Assessment required

Credit: Stranooden Group Water Scheme



Credit: Strandooden GWS



Process

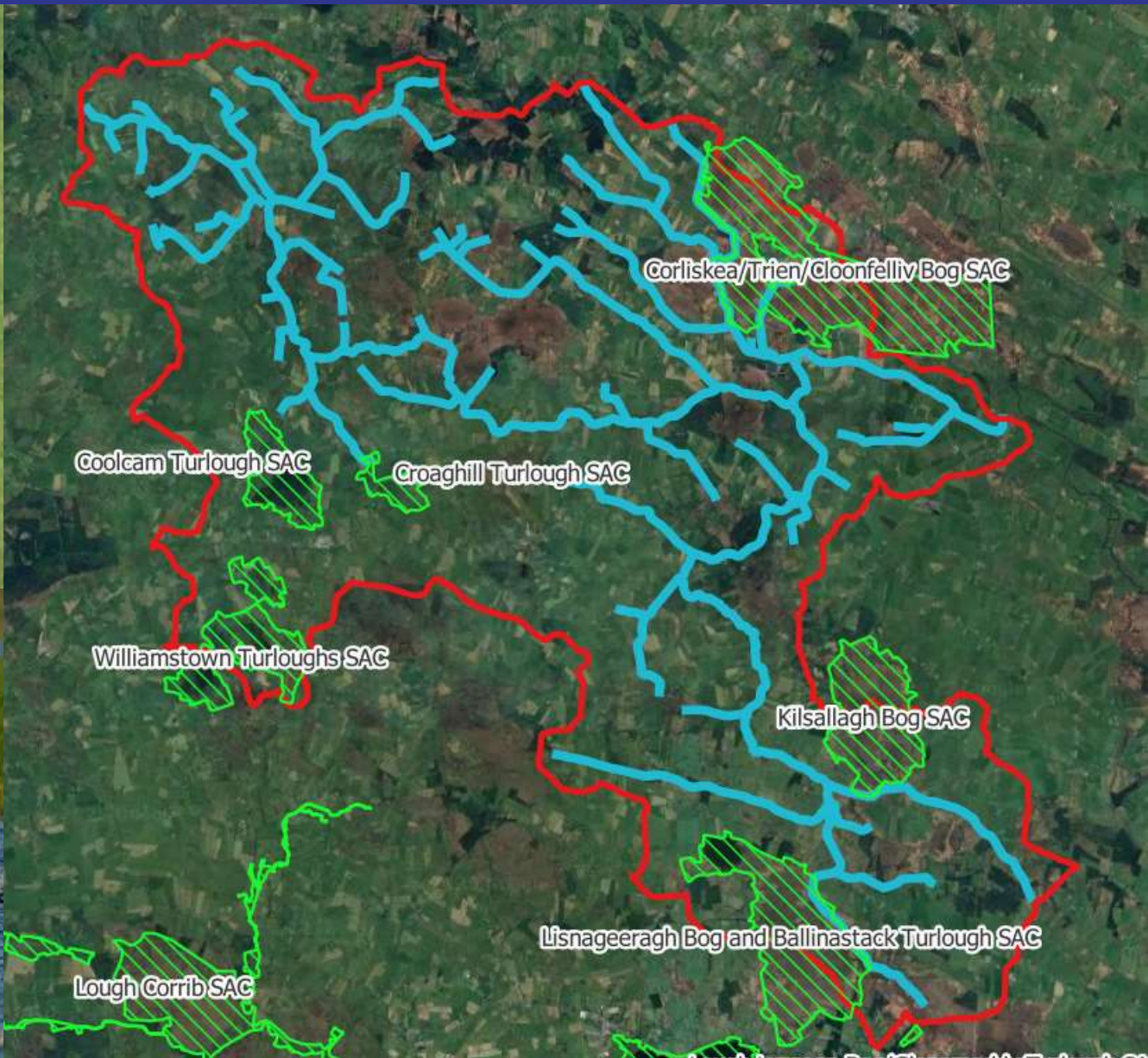
Two periods to make plan of actions:

- 1. After Run Off Risk Assessment
- 2. After Habitat Mapping

Proposed supporting actions sent to project for approval.

Once approved, farm work plan issued with approved/rejected actions.

Approval needed before action



Verification:

- Geotagged photos
- Dated receipts

We do spot checks



Spatially Targetted Riparian
Buffer Zone
Credit: Farming for Water EIP

- We want farmers to spend programme money on supporting actions.
- More supporting actions means:
 - Increased habitat payments
 - Reduced risk to water quality
- Stack measures for best effect
- Right Measure in the right place

