



Welcome

- Water of LIFE Background and Aims
- High Status Rivers
- The Waters of LIFE Pilot Agri Environmental Programme
 - Results based payments: what are they?
 - General Actions
 - Supporting Actions
 - Role of Advisors and Project Team



Background and Aims

- Waters of LIFE Integrated Project is funded by EU LIFE Programme (not CAP)
- The project aims to reward farmers that produce environmental conditions that will support high status rivers
- Ultimately it pays farmers to produce clean water and healthy rivers.
- Direct link between what happens on the land and the condition of the river.

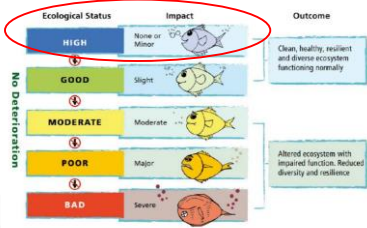


Waters of LIFE Catchments

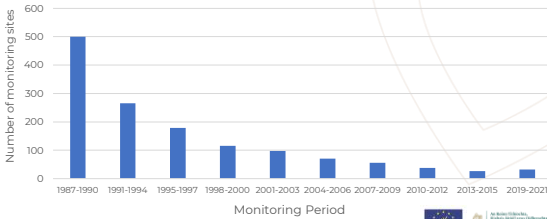
- Avonmore Wicklow
- Graney Clare / Galway
- Islands Roscommon / Galway
- Awbeg Cork
- Shournagh Cork
- Sheen (Control) Kerry



Project Focus – High Status Objective Rivers



Decline in Pristine (Q5) Rivers Sites



Problems in High Status Rivers

- Flow
- Sediment
- Nutrients
- Changes to physical condition of the river.



Natural River



Heavily modified river



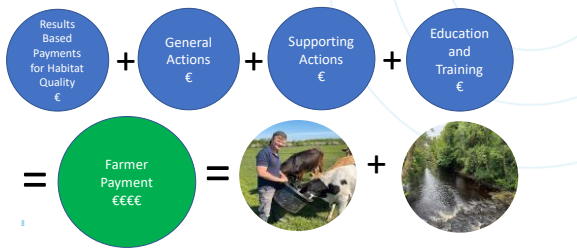
Light: Eileen Owens, LAFFRO

Co-funded by the European Union

Waters of LIFE Pilot Agri Environment Programme

4 Payment Streams

Waters of LIFE



Results Based Payments – what are they?

Waters of LIFE

Payments are linked to the nature quality of your farm
Higher nature quality = Higher payment level



Each plot (field) is scored out of 10 using a scorecard that captures high and low quality habitat which reflect past and current management.

Co-funded by the European Union

Co-funded by the European Union

Creating a market for nature

Putting a market value on the ecosystem services provided by nature on your farm



Waters of
LIFE



Creating a market for nature

Putting a market value on the services provided by nature on your farm



Biodiversity



Water Quality



Carbon

Waters of
LIFE



Waters of LIFE Results Based Payments

- Habitats included in Waters of LIFE Programme
 - Semi natural grassland
 - Woodland and scrub
 - Peatlands
 - Riverside habitat on improved grassland
 - Riverside habitat on tillage
 - Grassland on Peat
- Quality of each habitat is assessed using scorecards
- The higher the habitat quality, the better the water quality.



Why Riverside Habitat?

- Much more than a buffer zone to intercept pollutants
- Forms an important part of the river ecosystem, especially when it contains complex vegetation including trees.
- Trees beside a river:
 - Supply food for aquatic creatures (leaf litter)
 - Provide in-stream woody debris
 - Give shade to prevent overheating
 - Can help to mop up excess nutrients



Waters of LIFE



Riverside Habitat on Improved Grassland

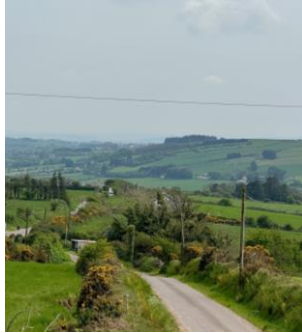


Semi-natural grassland and Riverside bonus (example: wet grassland)

Score	<4	4	5	6	7	8	9	10
Payment/ha	€0	€120	€140	€160	€240	€280	€360	€400
Riverside bonus/m	€0	€0.96	€1.12	€1.28	€1.92	€2.24	€2.88	€3.20

General Actions

1. Runoff Risk Assessment
2. Nutrient Management Planning
3. Nutrient Surplus Recording (using AgNav)
4. Precision Nutrient Application (using PBI and MoSt)
5. Min Till
6. Catch Crops
7. Mob grazing



Supporting Actions

- Approximately supporting actions available
- Chosen because of potential benefit for water quality
- Can be selected by advisor through the project app or web portal.
- Must be approved by project team before installation
- Must have a reason for specifying: can be used to:
 - Address issues identified in the Runoff Risk or
 - Improve habitat scores
 - Right measure for the right reason in the right place.
- Farmer paid on submission of verification data (geotagged photo, invoices)



Solar Pump on for alternative drinking point



Education and Training

Farmer Training

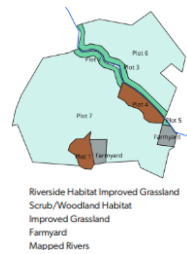
- One compulsory day per year for participants.
- Payment of €156 per day
- Additional optional:
 - Workshops
 - Site visits
 - Discussion groups



Credit: Peppi Mussel Project



Improved Grassland (Dairy)



Plot No.	Scorecard	Plot score	Habitat payment	River frontage (m)	Riverside bonus	Total plot payment
Plot 1	1 ha scrub/woodland habitat	8	€280	0	€0	€280
Plot 2	0.5 ha riverside habitat* improved grassland	8	€854	267	€0	€854
Plot 3	1.2 ha riverside habitat* improved grassland	8	€1,866	583	€0	€1,866
Plot 4	1.5 ha scrub/woodland habitat	8	€420	230	€515	€935
Plot 5	0.1 ha riverside habitat* improved grassland	8	€128	40	€0	€128
Plot 6	15 ha improved grassland habitat	0	€0	0	€0	€0
Plot 7	30 ha improved grassland habitat	0	€0	10	€0	€0
Total farm size	49.3 ha				Score total	€4,063

* This example of a riverside habitat payment is based on a 20m fenced width. A farmer is not obliged to provide the full 20m. They are paid on the width they provide.

Additional payments	
Training (based on 3 days)	€468.00
Runoff risk assessment	€250.00
Precision nutrient application	€1,452.50
	€2,170.50

Total farm payment= €4,063.00 + €2,170.50 = €6,233.50

Role of Advisor

- Be able to explain your farm plan to you
- Conduct runoff risk assessment and recommend supporting actions to reduce risks
- Score habitats and recommend supporting actions to improve scores
- Support you in implementing general actions
- Waters of LIFE team always available for advice and support
- Advisors will be paid by project



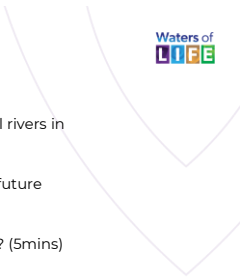
Key Takeaways

1. High Status rivers: a valuable resource we are rapidly losing
2. Farmers can play a vital role in helping to protect and restore these rivers.
3. Farmers will be rewarded for the efforts they make



Exercise

- 1. What changes have you seen in your local rivers in your lifetime? (5mins)
- 2. How would you like these rivers to be for future generations? (5mins)
- 3. What are the challenges to getting there? (5mins)



25

