




# Waters of LIFE Agri-Environmental Programme Pilot: General Actions

John Kelly: Catchment Agricultural Scientist  
May 2025



---

---

---

---

---

---

---

## Module 3: General Actions



- NMP - Nutrient Management Plan
- AgNav - Nitrogen Surplus Recording
- Precision Nutrient Application – Pasture Base Ireland & MoSt
- Catch Crops
- Minimum Tillage
- Mob Grazing (trial plots)
- Runoff Risk Assessment (short demonstration)

---

---

---




---

---

---

---

## NMP: Nutrient Management Plan



**Why:**

- Improved Management of Nutrients

**Where can I get an NMP:**

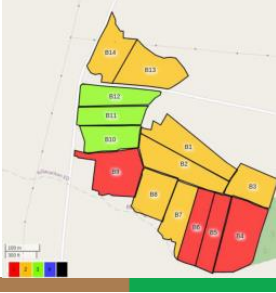
- Teagasc NMP Online
- Farm Eye
- Grassland Agri system

**Rate:**

- €400 per plan

**Who This Applies To:**

- Awbeg.....Required
- Shournagh.....Required
- Islands.....Optional
- Graney.....Optional
- Avonmore.....Optional



---

---

---

---

---

---

---

### NMP: Nutrient Management Plan

**Step 1:**

- Contact Farm Advisor
- Sign up to provider (Teagasc NMP, FarmEYE, Grassland Agri Systems)

**Step 2:**

- Soil Sample Farm
- 2 yr old samples max

**Verification:**

- Submit to Waters of LIFE:
- Farm Plan
- Soil Sample results



Waters of LIFE  
Co-funded by the European Union

---

---

---

---

---

---

---

---

### AgNav

**What is AgNav:**

- Sustainability Toolkit
- Nutrient Surplus Calculator
- ICBF, Bord Bia & Milk Co-Ops
- Climate Action, Air Quality & Water Quality

**Rate:**

- Free €€ to sign up €250/yr
- 50% AgriTxt or similar support: €200

**Who This Applies To:**

- Awbeg.....Required
- Shournagh.....Required



Waters of LIFE  
Co-funded by the European Union

---

---

---

---

---

---

---

---

### AgNav

**Step 1:**


- Assessment: (data compiled from)
- Bord Bia Audit
- ICBF

**Step 2:**

- Forecaster:
- N&P surpluses for farm

**Step 3:**

- Action Planner:
- Farmer & Advisor develop Action Plan



Waters of LIFE  
Co-funded by the European Union

**Verification:**

- Submit to Waters of LIFE:
- AgNav Action Plan
- AgNav Forecaster Targets
- Copies of Invoices/Receipts

---

---

---

---

---

---

---

---

## Precision Crop Management

Waters of  
LIFE

Co-funded by  
the European Union

### Overview:

- Using Pasture Base Ireland and MoSt Grass growth model
- Need to include data from NMP – e.g, soil test results
- Allows accurate recording per plot

### Rate:

- PBI Scorecard €490/yr (€70 per Q)
- Grass Measuring
- Non-derogation 0 - 35 recordings
- (derogation) 20 - 35
- €27.50/cover (max €962.5 for 35 covers)
- Total available: €1,452.50

**Who This Applies To:** Awbeg & Shournagh (Optional)



### Verification:

- Submit to Waters of LIFE:
- Copy of PBI Scorecard
- Copy of PBI Reports

## Catch Crops

Waters of  
LIFE

Co-funded by  
the European Union

### Overview:

- Planting crops for short duration on tillage ground
- Helps reduce nitrogen losses in fallow period
- Only non leguminous species supported

### Rate:

- €173/ha (winter)
- €229/ha (other/spring)
- MAX 50ha

### Who This Applies To:

- Awbeg & Shournagh (Optional)
- LPIS Parcels Declared as Tillage



## Catch Crops

Waters of  
LIFE

Co-funded by  
the European Union

### Requirements:

2 sowing options

- A (other cropping systems)**
  - Crop sown (mid Aug-Sept)
  - Remain in place until Jan 1<sup>st</sup>
- B (winter cropping systems)**
  - Crop sown (before August)
  - Remain in place until Sept 30<sup>th</sup>

### Verification:

- Submit to Waters of LIFE:
- Geotagged photos
- Proof of seed purchased

Table 1: Approved Catch Crop Species

Catch Crop Species	Monoculture seed rate kg/ha
Buckwheat	50kg/ha
Forage/Fodder Rape	8kg/ha
Mustard (Brown)	15kg/ha
Mustard (White)	7kg/ha
Oats	100kg/ha
Black Oats	60kg/ha
Phacelia	8kg/ha
Sunflower	20kg/ha
Dye	150kg/ha
Tillage Raddish	10kg/ha
Leafy Turnip	8kg/ha
Linseed	30kg/ha
Fodder Radish	10kg/ha
Kale/Rape hybrid	8kg/ha

## Minimum Tillage (Min Till)

Waters of  
LIFE

Co-funded by  
the European Union

### Overview:

- Low disturbance crop establishment
- Helps reduce nutrient and sediment losses in tillage

### Rate:

- €40/ha/yr
- MAX 50ha

### Who This Applies To:

- Awbeg & Shournagh (Optional)
- LPIIS Parcels Declared as Tillage (2024)
- Grassland Reseeding may be applicable




---

---

---

---

---

---

---

---



## Minimum Soil Disturbance

### No Ploughing

### Verification:

- Submit to Waters of LIFE:
- Geotagged Photos
- Site visit by team during crop establishment




---

---

---

---

---

---

---

---

## Mob Grazing

Waters of  
LIFE

Co-funded by  
the European Union

### Overview:

- Experimental measure to improve soil health and moisture retention and ultimately to reduce runoff
- High-density grazing
- Short grazing period
- Long rest period (50+ days)

### Rate:

- €750/ha

### Who This Applies To:

- Options in all catchments.
- Selected plots approved by Waters of LIFE scientist



### Verification:

- Geotagged photo at intervals throughout grazing season

---

---

---

---

---

---

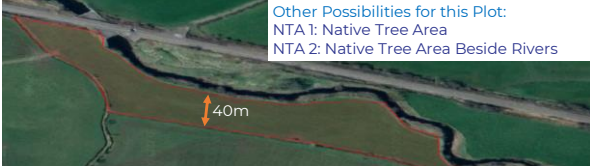
---

---

**Mob Grazing Example**

Waters of  
**IL LIFE**  Co-funded by  
the European Union

Other Possibilities for this Plot:  
NTA 1: Native Tree Area  
NTA 2: Native Tree Area Beside Rivers



- Suitable Mob Grazing Plots:**
- Long narrow fields beside watercourse
  - Odd shaped field not suited to 20m riverside habitat
  - Low nutrient application
  - No removal of crop for silage/hay
  - Contact Waters of LIFE catchment scientist if interested

---

---

---

---

---

---

---

---

**Mob Grazing Example**

Waters of  
**IL LIFE**  Co-funded by  
the European Union

Mob Grazing Area

Plot Area: 2 ha  
@ €750/ha = €1,500

Riverside Habitat Scorecard

River Length: 500m  
River Fenced: 4 meters  
Score 8/10 = €320

Total Plot Payment  
€1,820

---

---

---

---

---

---

---

---

**Runoff Risk Assessment**

Waters of  
**IL LIFE**  Co-funded by  
the European Union

- Overview:**
- Whole farm assessment
  - Identifying Flow Paths
  - Completed by Farmer & Farm Advisor Walking Farm Together
  - Knowledge Exchange between both

- Rate:**
- €250 (yr 1)
  - €250 (yr 3)

- Who This Applies To:**
- Required in all catchments



---

---

---

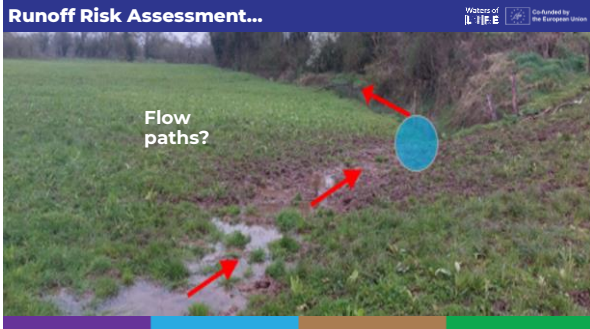
---

---

---

---

---




---

---

---

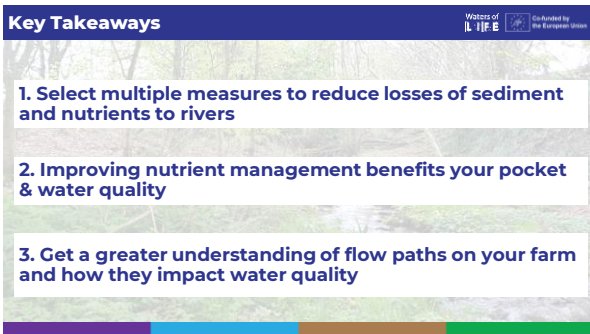
---

---

---

---

---




---

---

---

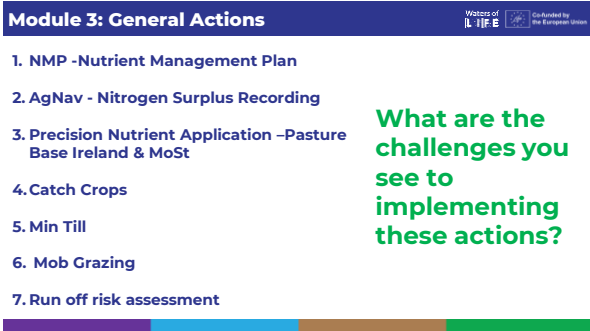
---

---

---

---

---




---

---

---

---

---

---

---

---