



Overview

1.What are they?

2.What is the point of them?


3.The list

4.Scenarios

5.The process

6.Exercise

What are Supporting Actions?



Tree planting

Voluntary measures:

- improve habitat quality
- address a specific risk to water quality.

Identified through the runoff risk assessment and habitat scoring

Funding is given to support these measures.

What do Supporting Actions achieve?

1) Improve score of a plot

- More money for farmer
- Improvement to habitat and water quality

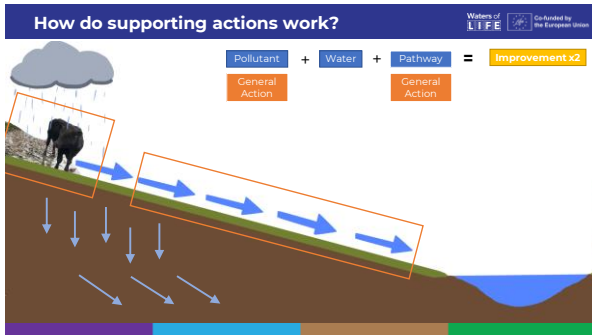
What do Supporting Actions achieve?

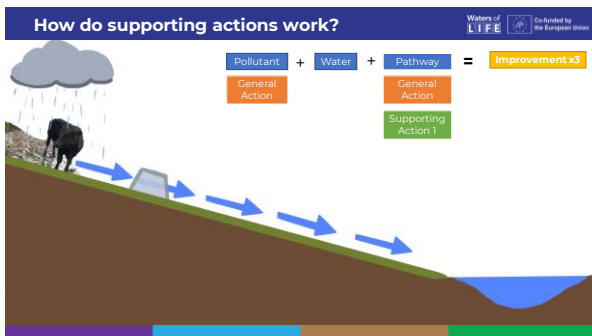
2) Address specific issues identified during the Run Off Risk Assessment

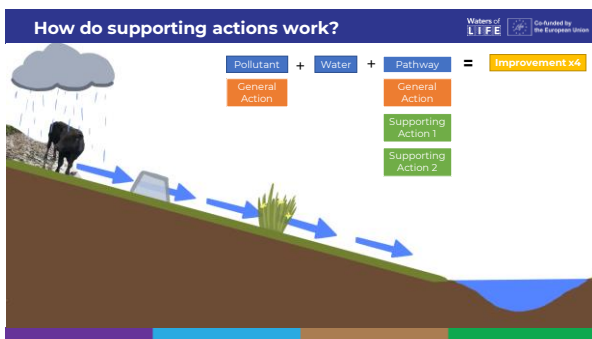
Specific concern identified can be mitigated to directly improve water quality

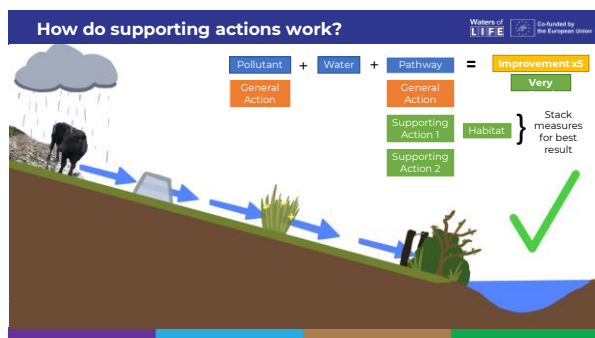
How do supporting actions work?

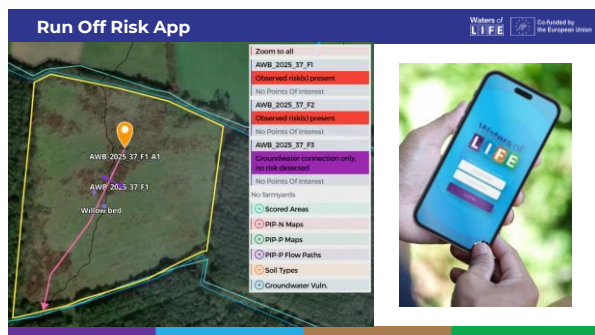
Pollutant + Water + Pathway = Potential Impact











The list of actions

Waters of LIFE Co-funded by the European Union

Farm Infrastructure		Watercourse Crossing	
A1	Permanent Single Strand Electric	A18	Culvert
A2	Sheep fence	A19	River, Stream Crossing/Bridge
A3	Sheep fence Mountain Rate	Water Provision	
A4	Barb Wire Fence	A20	Solar Pump
A5	Deer Fence	A21	Water Storage Tank
A6	Solar Powered Electric Fencer	A22	Pasture Pump
A7	Gateway Measures	A23	Water Trough
A8	Waters Bars	Invasive Species	
Nature Based Solutions		A24	Non Native Invasive Species
A9	Vegetated Bunded Drain	A25	Conifers (high cover)
A10	Earth Bund	A26	Conifers (medium cover)
A11	Sediment Trap	A27	Conifers (low cover)
A12	Hedgerow Establishment Cross-slope on Earth Bund	A28	Conifers (sparse cover)
A13	Crossland Buffer Cross-slope	Other Supporting Actions	
A14A	Spatially Targeted Riparian Buffer 0.01-0.04ha	A29	Water Table Management on Peat soils
A14B	Spatially Targeted Riparian Buffer 0.05-0.1ha	A30	Green Hay
A14C	Spatially Targeted Riparian buffer 0.11 to 0.2ha	A31	Contractor Mobilisation Fee
A15	Tree Planting	A32	Bespoke Measures
A16	Willow Beds	A33	Host Farmer Payment
A17	Small Scale Wetland Pond		

33 in total

Handouts on table

Available in the room, available online or ask your advisor

1) Poaching around water trough near drain

Waters of LIFE Co-funded by the European Union



Poaching around water trough



Cleared drain

1) Poaching around water trough near drain

Waters of LIFE Co-funded by the European Union

Water trough



- Placed 20m from surface waters
- Solid, level surface
- Multiple troughs in field to allow rotational grazing Up to €300/unit
- Piping & fittings paid extra to trough

1) Poaching around water trough near drain

Waters of LIFE Co-funded by the European Union

Solar Pump

- Permanently fenced surround
- Ensure adequate supply in well
- €2,500/unit; Max 2 units



1) Poaching around water trough near drain

Waters of LIFE
Co-funded by the European Union

Vegetated bunded drain

- Slow the flow and allows sediment settle
- NOT to be used as livestock crossing
- €1000/ vegetated bunded drain
- Min 20m – max 50m



1) Poaching around water trough near drain

Waters of LIFE
Co-funded by the European Union

Natural Drain Revegetation

- No cost
- Increases score every year



1) Poaching around water trough near drain

Waters of LIFE
Co-funded by the European Union



Outcome:

- Stacked supporting actions paid for
- = Risk Reduced**
- Increased payments to farmer for habitats

2) Farm roadway down to river

Waters of LIFE Co-funded by the European Union



2) Farm roadway down to river

Waters of LIFE Co-funded by the European Union

Water Bar:



213 euro/unit, max of 10

Sediment Trap:



120 euro per unit/yr, Max of 3

2) Farm roadway down to river

Waters of LIFE Co-funded by the European Union



2) Farm roadway down to river

Waters of LIFE
Co-funded by the European Union



3) Surface water pathway heavily stocked field

Waters of LIFE
Co-funded by the European Union



3) Surface water pathway heavily stocked field

Waters of LIFE
Co-funded by the European Union



3) Surface water pathway heavily stocked field

Waters of LIFE
Co-funded by the European Union

Grassland buffer (cross slope):

- Fenced - 3m width
- Unfertilised
- NOT farm tracks
- €5.45/m



3) Surface water pathway heavily stocked field

Waters of LIFE
Co-funded by the European Union

Fencing:

- Sheep fence
- Barb wire
- Permanent electric



- If replacing old fence, new fence has to move at least 2m further into field
- Fence must be fit for purpose
- Multiple rates, see booklet for further details

3) Surface water pathway heavily stocked field

Waters of LIFE
Co-funded by the European Union



Tree planting:

Trees can be planted along riverside to help increase score and buffering capacity

- €16/whip with a max of 100
- Willow planting €34/m at a max of 200m
- Native Tree Area Scheme

3) Surface water pathway heavily stocked field



Native Tree Area Scheme Worked Example



3) Surface water pathway heavily stocked field



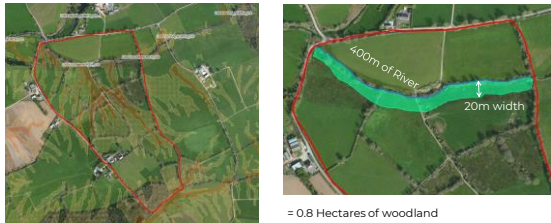
Native Tree Area Scheme Worked Example



3) Surface water pathway heavily stocked field



Native Tree Area Scheme Worked Example



3) Surface water pathway heavily stocked field

Native Tree Area Scheme Worked Example

You get your first grant payment after you plant your trees. The second payment can be claimed at least 4 years after planting. Annual premium is for 10 years

Payment Type	Standard rates	Payment Type	Amount
Grant 1 rate (Euro/ha)	€5,058	Grant 1	€4,046.40
Grant 2 rate (Euro/ha)	€1,686	Grant 2	€1,348.80
Annual Premium (Euro/ha)	€2,284	Annual Premium over 10 years*	€18272
IS 436 Stock Fencing Grant	€5.50/m	IS436 Stock Fencing Grant at 400m	€2200
Deer Tree Shelter Grant	Up to €1,600/ha	Deer Tree Shelter Grant at 0.9 ha	€1280
		Total	€27146

Provision of a forester

Waters of LIFE have taken on a contracted forester to aid with grant applications and to guide on implementation of measures on the ground where identified



Bespoke Measures

Innovative approaches to reducing risk to water quality and improving habitat score.

Suggest them and we will see what we can fund



Host Farmer Payment

Waters of LIFE

Co-funded by the European Union



For allowing access to farm for demonstrations etc.

Nothing required from farmer other than parking and access to fields and shelter (shed) where needed

180 euro per day.

Contractor mobilisation

Waters of LIFE

Co-funded by the European Union



Where a contractor is needed on site.

Project can pay directly

Or farmer can avail of 200 euro mobilisation fee

Programme led supporting actions

Waters of LIFE

Co-funded by the European Union


Larger scale projects with more input from the team.

Still suggested by Farm Advisor

After first round of habitat assessments.

Contractor mobilisation

Include: Drain Blocking, Bracken Management, Invasive species management



Programme led supporting actions

Waters of LIFE

Co-funded by the European Union



BeforeAfter

Assessment required

Programme led supporting actions

Waters of LIFE

Co-funded by the European Union



Stranooden Group Water Scheme

The Process

Waters of LIFE

Co-funded by the European Union

Run Off Risk Assessment

Habitat Assessment

Chat with Advisor

Chat with Advisor

Apply for Supporting Action



Two periods to make a plan of actions:
After Run Off Risk Assessment and Habitat Mapping

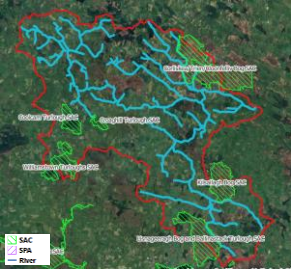
Proposed supporting actions sent to team for approval.

Once approved a farm work plan will be issued with approved/rejected actions.

Need approval before proceeding with supporting actions

The Screening Process







Waters of LIFE

Co-funded by the European Union

Verification

Photos of the action complete and/or dated receipts

Spot checks!






Waters of LIFE

Co-funded by the European Union

Key Takeaways

- Spend our money, increase habitat payments, reduce risk to water quality!
- Stack measures for best effect
- Right Measure in the Right Place



Waters of LIFE

Co-funded by the European Union

14

Exercise:

Which Supporting actions
help improve our score?

Farm Infrastructure		Nature Based Solutions	
A1	Permanent Single Strand Electric	A9	Vegetated Bunded Drain
		A10	Earth Bund
A2	Sheep fence	A11	Sediment Trap
		A12	Hedgerow Establishment
A3	Sheep fence Mountain Rate		Cross-slope on Earth Bund
		A13	Crossland Buffer Cross-slope
A4	Barb Wire Fence		Spatially Targeted Riparian Buffer 0.01-0.04ha
		A14A	
A5	Deer Fence		Spatially Targeted Riparian Buffer 0.05-0.1ha
		A14B	
A6	Solar Powered Electric Fencer		Spatially Targeted Riparian buffer 0.11 to 0.2ha
		A14C	
A7	Gateway Measures	A15	Tree Planting
		A16	Willow Beds
A8	Waters Bars	A17	Small Scale Wetland Pond

Watercourse Crossing	
A18	Culvert
A19	River, Stream Crossing/Bridge

Water Provision	
A20	Solar Pump
A21	Water Storage Tank
A22	Pasture Pump
A23	Water Trough

Invasive Species	
A24	Non Native Invasive Species
A25	Conifers (high cover)
A26	Conifers (medium cover)
A27	Conifers (low cover)
A28	Conifers (sparse cover)

Other Supporting Actions	
A29	Water Table Management on Peat soils
A30	Green Hay
A31	Contractor Mobilisation Fee
A32	Bespoke Measures
A33	Host Farmer Payment
